



CINCH+

competent in competition + health



FOREWORD

In 2012, the Faculty of Business Administration and Economics at the University of Duisburg-Essen embarked on a journey that has put Essen on the map of health economics research in Germany and internationally. Together with our partners at the RWI – Leibniz Institute for Economic Research and at the Düsseldorf Institute of Competition Economics, we were awarded funding for CINCH, our national research center for health economics.

CINCH is devoted to the analysis of competition within the health care sector. Bringing together researchers using experimental methods with those who apply econometric methods to real-world data, it is our aim to understand whether market mechanisms may give more value for money in times when the public purse is strained by demographic change and technology-driven cost inflation.

Our research gets published in leading scientific journals, and yet it is our aim to be relevant to policy makers in Germany and beyond. Most of our research involves junior researchers at the beginning of their academic careers. Thanks to extensive international networks, collaborations with representatives of the health care sector, and a number of successes in the acquisition of competitive research grants, a strong and dynamic research environment has emerged.

During our first years, CINCH has become much more than the sum of its parts. Alongside the core activities carried out within and between our research groups, several new initiatives have seen the light of day. Our summer school CINCH Academy offers courses to graduate students. The Essen Health Conference is an annual international conference which attracts top academics from all over the world.

The latest addition is another joint venture between the University and the RWI Leibniz Institute. In our Leibniz Science Campus we will explore how demographic change affects the provision of health care. In other words, health economics research will keep on thriving in Essen!



Prof. Dr. Martin Karlsson



Prof. Martin Karlsson, Ph.D.

Martin Karlsson is Professor of Economics of the University of Duisburg-Essen since 2012, a Research Fellow of IZA and of the University of Oslo and Director of CINCH.

At a glance



STATEMENT

CINCH stands for “Competent in Competition and Health”. This statement encapsulates the mission of our health research center. The current public debate on health care in many Western countries concerns the issue of continuing to provide high quality care services while simultaneously controlling costs. More competition in the markets for health care and insurance may help to mitigate this trade-off. Aspects of competition within health care are therefore at the core of health economics research at CINCH, which is organized within two junior research groups and several complementary projects.



CINCH is one of the leading research centers in the field of health economics in Germany.

Amongst the four national health economic research centers, CINCH has the strongest focus on economics.

CINCH is the only center conducting state of the art laboratory and experimental research in health economics.

In recent years, the city of Essen has evolved into an important location for academic research in health economics. The rise of health economics in Essen is mainly due to a successful cooperation between the RWI - Leibniz Institute for Economic Research and the Faculty of Business Administration and Economics at the University of Duisburg-Essen. Thanks to extensive international research networks, collaborations with representatives of the health care sector, and a number of successes in the acquisition of competitive research grants, a strong and dynamic research environment has evolved.



ACHIEVEMENTS

121 publications in 75 peer-reviewed journals.



Research

- ◇ Presentation of our work at more than 350 conferences (37% international).
- ◇ €8,236,087 external funding, of which €5,353,086 is from competitive funding.
- ◇ Starting a working paper series as an outlet for leading international experts.
- ◇ In the research laboratory *elife*, numerous health economic experiments were conducted.
- ◇ Two members of CINCH (Schmitz, Tauchmann) have reached full professorship positions during the first funding phase.

Activities

- ◇ *Essen Health Conference* – an annual academic event with distinguished keynote speakers and participants from all over the world.
- ◇ *CINCH Academy* – a summer school to promote young academics in health economics featuring state-of-the-art lecturers.
- ◇ *Research Seminar* – invitations of internationally leading health economists from both Europe and North America.

Examples: William Greene (NYU), Michael Lechner (St. Gallen), Owen O'Donnell (Rotterdam), Kjell Salvanes (NHH), Damon Clark (UC-Irvine), Jon Kolstad (UC-Berkeley).

Policy Impact:

- ◇ CINCH members are active members of the board of the German Society for Health Economics (dggö), focusing on topics of relevance for health care policy in Germany.
- ◇ Board member Jürgen Wasem was ranked No. 7 in the FAZ policy relevance ranking of all economists in Germany in 2013 and No. 18 in 2014.

	2012	2013	2014	2015	2016
Publications (peer-reviewed)	24	23	26	21	23
BWL 2014 ranking	1.3	4	6.4	4.9	8
VWL 2013 ranking	0.5	1.6	2.9	3	4.3
Other publications	25	16	13	19	18
Working papers, mimeo	2	10	25	9	32
Conferences	40	58	94	91	78
of which: international	18 (45%)	24 (41%)	38 (40%)	27 (30%)	26 (33%)
External funding	€2,218,794	€927,513	€1,249,325	€2,420,523	€1,419,933
of which: DFG	€273,958 (12%)	€145,200 (16%)	€563,413 (45%)	€14,000 (1%)	€184,000 (13%)
of which: other competitive	€107,000 (5%)	€154,015 (17%)	€287,044 (23%)	€2,406,523 (99%)	€1,217,933 (86%)

Note: All figures without the achievements of the RWI.

About us



RESEARCH GROUP LEADERS



Jun.-Prof. Dr. Daniel Avdic

Daniel Avdic is Assistant Professor of Health Economics at the University of Duisburg-Essen. He studied economics, statistics and economic history at Uppsala University in Sweden and received his PhD in Economics from Uppsala in 2014. He has previously worked at the Institute for Futures Studies in Stockholm and the Institute for the Evaluation of Labor Market and Education Policy (IFAU) in Uppsala.

Junior research group

Empirical Analysis of Competition in Health Care Markets (EACH)

The junior research group empirically analyzes competition among providers and payers in the different levels within the German health care system.

Jun.- Prof. Dr. Nadja Kairies-Schwarz

Nadja Kairies-Schwarz is an experimental economist. Her main research interest is the analysis of individual behavior and preferences of agents in health care markets. She is an expert in conducting laboratory and artefactual field experiments with a health economic focus. Jointly with the members of the P4P group she has published papers on payment incentives and artefactual field experiments with real physicians.

Junior research group

Health Care Markets (HCM)

The junior research group HCM applies the experimental method to analyze preferences and behavior of providers and consumers in healthcare markets.



Jun.- Prof. Dr. Annika Herr

Annika Herr has been Assistant Professor at the University of Düsseldorf since 2012. Her research in theoretical and empirical health economics focuses on competition, efficiency, and quality in German health care markets. Besides the project on long-term care at the CINCH, she leads a project on competition in pharmaceutical markets and is a participating scientist in the Research Training Group "Competition Economics" at Düsseldorf.

Project

Demand and Competition in Long-Term Care (DCLTC)

The project DCLTC empirically analyzes the German market for long-term care, in particular demand for and competition in quality and prices across nursing homes and ambulatory care.

Prof. Dr. Jürgen Wasem

Jürgen Wasem holds the Chair of Medicine Management at the University Duisburg-Essen since 2003 and has previously been working at the University Greifswald and the LMU Munich. In the period of 2013/2014, he was the board chairman of the German Society for Health Economics. One of his research focuses is on the regulative circumstances for competition in the social health insurance system, which refers to the financial architecture for health insurers and the payment systems for health care systems.

Project

Risk Adjustment in Health Insurance (RAHI)

The project RAHI analyzes insurer competition under premium regulation.



Uni DUE



Prof. Dr. Jeannette Brosig-Koch

Jeannette Brosig-Koch holds a Chair of Quantitative Economic Policy at the University of Duisburg-Essen and is the founder and director of the Essen Laboratory for Experimental Economics (elfe). Her main research interests are in the fields of experimental health economics and market design. Professor Brosig-Koch is a member of the Management Board of the Behavioral Experiments in Health Network (BEHnet) and serves as the General Secretary of the German Health Economics Association (dggö).

Project

Pay for Performance (P4P)

The project P4P applies experimental economic methods to study the behavior of actors in health care, particularly of independent physicians.

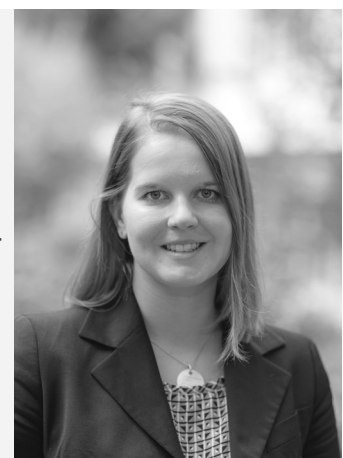
Jun.-Prof. Dr. Katharina Fischer

Katharina Fischer is Assistant Professor in empirical health economics at the Faculty of Business Administration and Economics of University of Duisburg-Essen. Katharina Fischer holds a PhD in business administration with a focus on health economics from LMU Munich. She was head of the junior research group on pharmacoconomics at Hamburg Center for Health Economics, University of Hamburg between 2012 and 2016. In 2015/2016, she collaborated with Columbia Business School, New York, USA as visiting researcher.

Project

Empirical Health Care Management

The project empirically analyzes the market access of health technologies, the role of innovation and the effects of regulated health care markets on agent behavior.



Uni DUE / Frank Preuß



DIRECTORS

Prof. Dr. Martin Karlsson

Martin Karlsson has been Professor of Health Economics at the University of Duisburg-Essen since 2012. Before taking up his current position at the Chair of Health Economics in Essen, Martin worked at the Technische Universität Darmstadt (2009-12), at the University of Oxford (2006-09) and at Cass Business School in London (2005-06). Martin received his doctoral degree from the European University Institute in 2007. Beside his work at the Chair of Health Economics, Martin is a Research Fellow of IZA and of the University of Oslo and principal investigator of several international research projects.



Prof. Dr. Reinhold Schnabel

Reinhold Schnabel is Professor of Finance at the University of Duisburg-Essen. He received his doctoral degree from the Goethe University Frankfurt (1993) and habilitated at the University of Mannheim (1999). Reinhold has been a permanent Guest Professor at the Center for European Economic Research (ZEW) since 2002. His research focuses on empirical economic research on social protection and the labor market. Since 2009, Reinhold has been a member of the *Federal Ministry of Family Affairs, Senior Citizens, Women and Youth (BMFSFJ)* and the *Federal Ministry of Finance (BMFF)*.

CINCH BOARD

The CINCH board consists of the directors, the project leaders, a representative of the junior researchers as well as the following associates:

- ◇ Boris Augurzky (the RWI Essen)
- ◇ Florian Buchner (Carinthia University of Applied Sciences)
- ◇ Volker Clausen (University of Duisburg-Essen)
- ◇ Justus Haucap (Heinrich Heine University Düsseldorf)
- ◇ Christoph M. Schmidt (Ruhr-University Bochum, the RWI Essen)
- ◇ Reinhold Schnabel (University of Duisburg-Essen)
- ◇ Harald Tauchmann (Friedrich-Alexander University Erlangen-Nürnberg)

ALUMNI



Prof. Dr. Harald Tauchman

Harald Tauchmann has been Professor of Health Economics at the Friedrich-Alexander University Erlangen-Nürnberg since January the 1st 2013. Before, he was a junior group leader at CINCH and a scientific employee at the RWI - Leibniz Institute for Economic Research in Essen. His scientific focus is based on applied econometrics and empirical health economics with special regard to topics of individual health behavior and competition in health insurance.

Prof. Dr. Hendrik Schmitz

Hendrik Schmitz is Professor of Statistics and Empirical Economics at the Paderborn University. He studied Economics at the FU Berlin and Universidad Carlos III de Madrid and obtained his doctoral degree in 2011 from the University of Duisburg-Essen and the Ruhr Graduate School in Economics. Research interests: Empirical health economics, in particular health insurance; determinants of health; long-term care; applied microeconometrics.



STRUCTURE

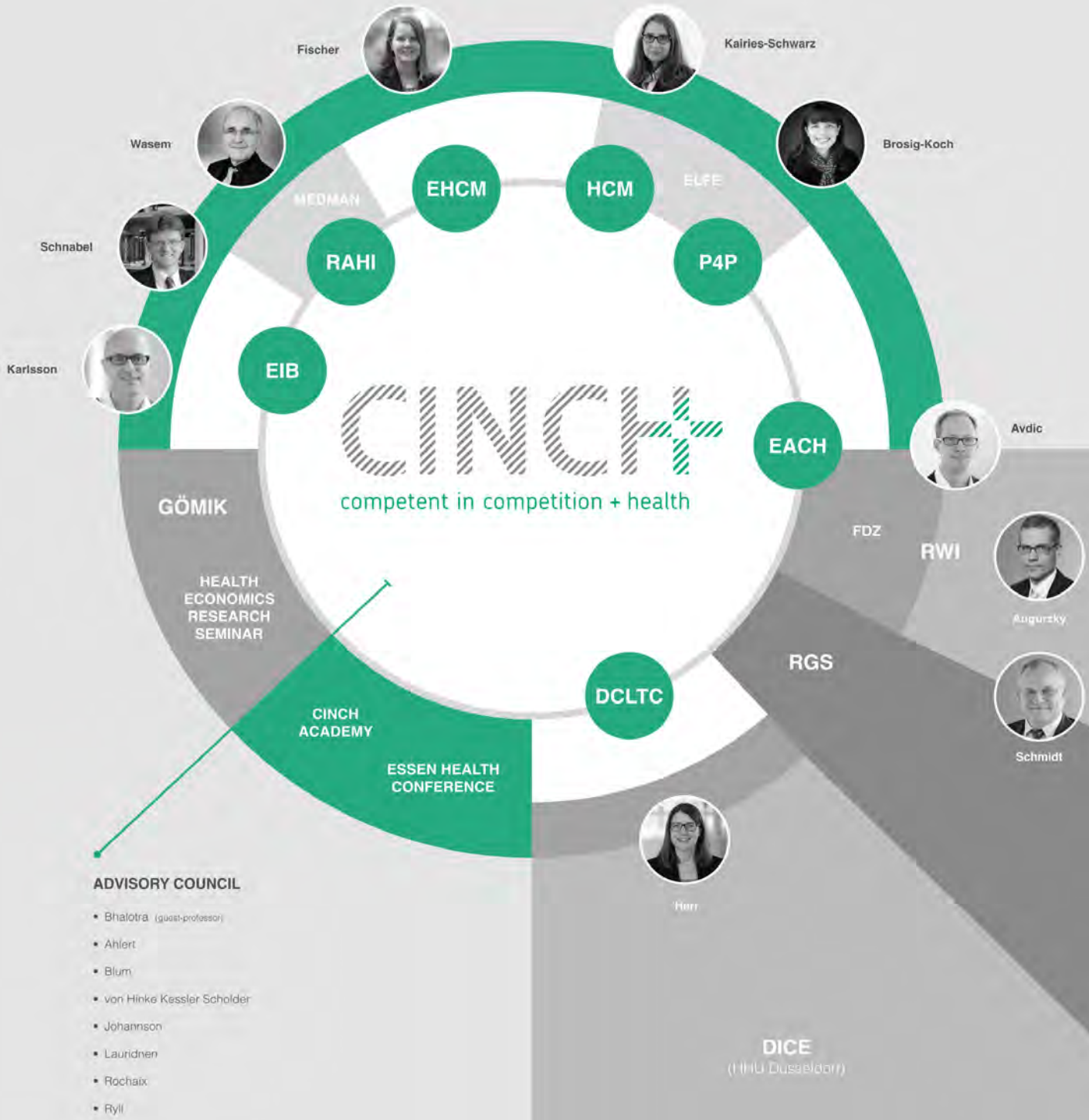
CINCH is a research center belonging to the Faculty of Business Administration and Economics at the University of Duisburg Essen. CINCH houses two junior research groups led by Jun.- Prof. Dr. Daniel Avdic and Jun.- Prof. Dr. Nadja Kairies-Schwarz. In addition, CINCH established three satellite projects (P4P, RAHI and DCLTC) and one project funded by the European Investment Bank (EIB). During the second funding period, CINCH has also been joined by Jun.-Prof. Dr. Katharina Fischer and her research project EHCM.

The research activities at CINCH are overseen by the directors and the Board, which consists of the directors, project leaders, and research associates.

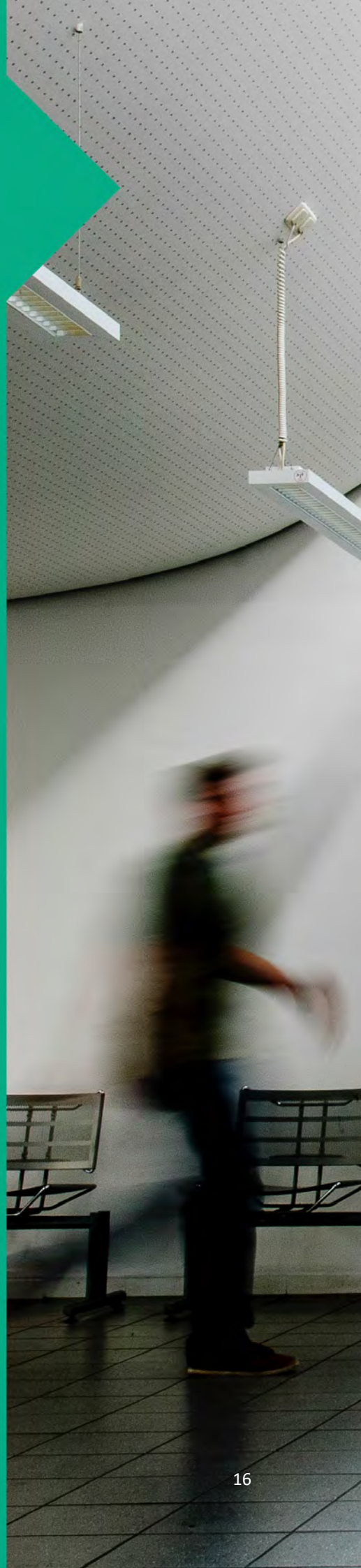
Every year, CINCH organizes the Essen Health Conference and CINCH Academy. CINCH members also teach in the Health Economics Master Program (GÖMIK) at University Duisburg – Essen and in the graduate program at the Ruhr Graduate School (RGS) in Economics. The close cooperation with the RWI - Leibniz Institute for Economic Research gives access to extensive data sources from the Research Data Center Ruhr (FDZ). The satellite projects DCLTC and RAHI unites CINCH with Düsseldorf Institute for Competition Economics (DICE) and the Medical Faculty of University Duisburg - Essen.

Funded by the Ministry of Education and Research (BMBF).

Exchange program, domestic & international research co-operations.



Cooperation



ESSEN LABORATORY FOR EXPERIMENTAL ECONOMICS (elfe)

The methods of experimental economics are applied to analyze individual and group behavior under controlled laboratory conditions. With the help of economic experiments, existing theories in health economics can be tested and, based on the experimental observations, new models of economic behavior can be developed. Moreover, economic experiments allow to testbed newly designed economic institutions like reputation schemes or physician contracts.

Health economists at CINCH are particularly concerned with preferences and behavior of providers and consumers in the health care sector, e.g. the determinants of health insurance choice or the behavioral effects of various payment schemes for physicians. The Essen Laboratory for Experimental Economics (elfe) is the perfect place to conduct such experiments.





The elfe was opened in 2009 with a speech by Nobel prize winner Reinhard Selten and since then has been used by local researchers and visiting scholars. By now, over 600 experiments have been carried out at elfe with over 6,700 participants. The laboratory consists of 28 computer work spaces including 12 soundproof cabins that are connected through a video and audio conference system. This unique equipment is designed to analyze the interaction of economic behavior and different kinds of communication in a controlled way.

A state-of-the-art experimental laboratory and a research center with a strong focus on experimental methods in health economics is a unique German institution that has already produced impressive scientific output to date.

THE RWI - LEIBNIZ INSTITUTE FOR ECONOMIC RESEARCH

CINCH intensively cooperates with the RWI, one of the leading institutes for economic research and evidence-based policy advice in Germany. The RWI is a member of the Leibniz Association and currently employs more than 100 persons, including almost 66 scientists. Prof. Dr. Christoph M. Schmidt, the President of the RWI and Chair of the German Council of Economic Experts, is advising director of CINCH. He was ranked No. 2 in the FAZ policy relevance ranking of all economists in Germany in 2013.

The RWI has a long-standing expertise in health economics, applied empirical research being a major competence of its research division “Health Economics”. One major research field of the health division is the econometric analysis of both the supply and demand side of health care markets, first and foremost inpatient care, but also hospitals, rehab clinics, and nursing homes. The latter includes analyses of competition among sickness funds. The research division is headed by Prof. Dr. Boris Augurzky, who is among the Top 100 in the FAZ policy relevance ranking of all economists in Germany. Boris Augurzky is involved at CINCH as a board member.

The Research Data Center Ruhr at the RWI (FDZ Ruhr), accredited by the “German Data Forum” (Rat SWD), provides different data sources, e.g. data collected for billing purposes and made available by a major German group of sickness funds (BKKs). The data cover about 13 million enrollees from about 100 BKK sickness funds for the years 2006 to 2012. They include detailed information on inpatient and outpatient health care utilisation and diagnoses by individual enrollees. The data also covers individual pharmaceutical consumption. Moreover, a basic set of socioeconomic variables such as gender and age is available.



RWI / Julica Bracht

Prof. Christoph M. Schmidt, PhD.

*President of the RWI & Advising Director
at CINCH*

The BKK also provides administrative data coming from the German system of diagnosis-related groups (DRGs). More than 50 million hospital cases of about 2,000 German hospitals are available for the years 2005 to 2007. The data comprise all inpatient cases in Germany except psychiatric ones and are originally collected for billing purposes towards health insurance companies. They include detailed information on patient characteristics such as age, gender, length of stay with admission and discharge date and status, main diagnosis, and secondary diagnoses, given with the respective ICD-10 codes. The data further contain information on the hospital level, specifically ownership type (private not-for-profit, private for-profit and public), bed capacity, and teaching status. Furthermore, ZIP-codes for each patient as well as the exact address of each hospital enable geocoding of the data.

Furthermore, the RWI hosts a hospital panel covering the period from 1995 to 2014. It contains comprehensive information on German hospitals from several sources, in particular subjective and objective quality data and a rich set of structural information (e.g. number of beds, ownership type, information on mergers and acquisition, etc.). The data set also contains comprehensive information on prices and case mix indices of German hospitals.

Researchers at CINCH collaborate intensively with researchers at the RWI or use the data at the "FDZ Ruhr" for research projects. For example, they analyze whether people respond to published quality data when choosing a hospital or they assess spillover effects of local crime on individuals' mental wellbeing. Moreover, CINCH and the RWI researchers cooperate in the project "Demographic change in the EU, the oldest-old and the need for innovative models of more efficient elderly care" funded by the European Investment Bank (EIB) – Institute and in the Leibniz Science Campus Ruhr "Health Care Challenges in Regions with Declining and Ageing Populations" funded by the Leibniz Association.



RWI / Julia Bracht

Prof. Boris Augurzky, PhD.

Chief of Research Division "Health Economics" at the RWI & CINCH Board Member

CINCH GUEST PROFESSORSHIP



Prof. Sonia Bhalotra, PhD.

Professor of Economics, University of Essex.

Sonia Bhalotra is Professor of Economics at the University of Essex. She obtained an MPhil and PhD from Oxford and a BSc Hons. from Delhi. Sonia is a visiting Professor at the University of Duisburg - Essen, CROP Research Fellow (Bergen), research fellow at SFI Denmark, as well as is included in the Advisory Boards (inaugural member) of Academics Stand Against Poverty (Yale), the Goettingen India Center and the UEA Development Center, and on the British Academy Area Panel for South Asia. She belongs to the Council of the European Society of Population Economics, a Scientific Committee at the World Health Organization, several ESRC committees and the International Review Panel of the Danish and Swedish Research Councils. She joined IZA as a Research Fellow in April 2007.

She is Co-Investigator and Co-Director of the ESRC Center for Microsocial Change (ISER) and Co-Investigator of the Programme for Human Rights, Big Data and Technology (Law) at Essex. Her recent research funding is from Grand Challenges Canada, ESRC, International Growth Center, RCUK-Newton and the Bank of Sweden.

Her research is on the creation of human capital, the long benefits of early life health interventions, gender inequality, the political economy of public service provision, intergenerational mobility and the dynamics of mortality, fertility and sex selection.



NETWORK

Per Johansson (Uppsala University)

Petter Lundborg (Lund University)

Johan Vikström (IFAU-Uppsala)

Sonia Bhalotra (University of Essex)

Tor Iversen (University of Oslo)

Therese Nilsson (Lund University)

Nicolas Ziebarth (Cornell University)

Les Mayhew (Cass Business School)

Ben Rickayzen (Cass Business School)

Michael Kuhn (Vienna Institute of Demography)

Activities



ESSEN HEALTH CONFERENCE

Essen Health Conference is an annual international conference in health economics that is devoted to an emerging research topic. It brings together internationally acclaimed scholars and promising junior researchers from both North America and Europe. The papers that are presented and discussed during the two-day conference are selected by an international scientific committee. Essen Health Conference is very successful in attracting participants from all continents resulting in more submissions, more sessions, and lower acceptance rates every year.



- ◇ *2010 Health. Happiness. Inequality.*
- ◇ *2011 Insurance. Inequality. Health.*
- ◇ *2012 Health. Development. Inequality.*
- ◇ *2013 The Economics of Disease.*
- ◇ *2014 Rethinking Barker.*
- ◇ *2015 Health. Skills. Education.*
- ◇ *2016 Fertility. New Economic Perspective on an Old Topic*

◇ *2017 Health and Labor*

Keynotes: Hoyt Bleakley (University of Michigan), Maarten Lindeboom (VU University Amsterdam), Helena Skyt Nielsen (Aarhus University), Philip Oreopoulos (University of Toronto).

Scientific committee: Martin Karlsson, Therese Nilsson, Victoria Baranov, Kasey Buckles, Arnaud Chevalier, Gabriella Conti, Jesse Matheson, Stefanie Schurer, Meghan Skira, Marian Vidal-Fernandez, Natascha Wagner, Nicolas Ziebarth.



CINCH ACADEMY

CINCH hosts a summer school to promote the training of junior researchers in health economics. Every year 20 young health economists from all over Europe meet at CINCH to learn from distinguished experts. The program also provides the opportunity for participants to receive constructive feedback on their own research.

- ◇ 2013 Competition & Market Imperfections in the Health Care Sector (Theory & Empirical Evidence).

Instructors: Albert Ma (Boston) & Pedro Pita Barros (Lisbon).

- ◇ 2014 Empirical Methods in Health Economics.

Instructors: Michael Lechner (St. Gallen) & William Greene (New York).

- ◇ 2015 Health Capital & Social Mobility – Concepts, Analysis & Applications.

Instructors: Kjell Salvanes (Bergen) & Andrew Jones (York).

HEALTH ECONOMICS RESEARCH SEMINAR

Health Economics Research Seminar takes place every week since 2012. Around half of the invited speakers are external and the other half internal, thus providing opportunities for junior researchers to interact with leading experts in their field and to receive feedback on their research.

Many distinguished health economists visited Essen:

- ◇ William Greene (New York), Michael Lechner (St. Gallen), Owen O'Donnell (Rotterdam), Martin Salm (Tilburg), Stephanie von Hinke Kessler Scholder (York), Petter Lundborg (Lund), Carol Propper (ICL), amongst others.

The research seminar contributes to putting Essen and CINCH on the international map for research in health economics.



COOPERATIVE RESEARCH SEMINARS

Cooperation between regional universities in inviting promising economists from overseas.

- ◇ Collaborating Universities: Duisburg-Essen, Wuppertal, Bochum, Paderborn and Düsseldorf.
- ◇ Focus on rising stars with great academic track records.

- ◇ Past visitors:
 - Damon Clarke (University of California)*
 - Dave Donaldson (Stanford University)*
 - Jonathan Kolstad (University of California)*

WORKING PAPER SERIES

In 2014, CINCH initiated a working paper series for high-quality research papers on various health economics topics. The series includes proceedings from conferences, summer schools and seminars organised by CINCH. Some recent examples:

2016/05

Sarah H. Hofmann and Andrea M. Mühlenweg
- Gatekeeping in German Primary Health Care

2016/03

Sonia Bhalotra, Martin Karlsson, Therese Nilsson, Lauren E. Jones and Nicolas R. Ziebarth
- US Child Safety Seat Laws: Are they Effective, and Who Complies?

2016/02

Damian Clarke and Hanna Mühlrad - The Impact of Abortion Legalization on Fertility and Maternal Mortality: New Evidence from Mexico

2015/12

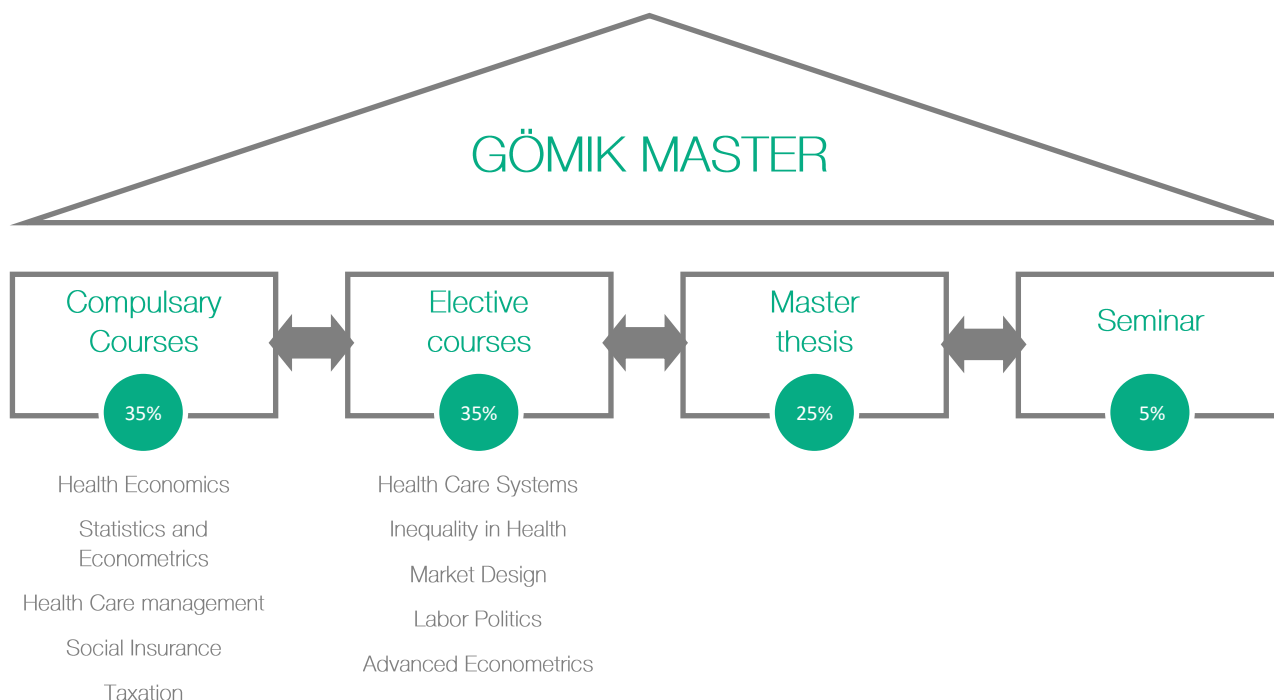
Daniel A. Kamhöfer, Hendrik Schmitz, Matthias Westphal - Heterogeneity in Marginal Non-monetary Returns to Higher Education

2015/11

Samantha B. Rawlings - Parental Education and Child Health: Evidence from an education reform in China



HEALTH ECONOMICS MASTER PROGRAM



GÖMIK, a bilingual master program in economics, is an academic two-year program in health economics.

GÖMIK is an academic two-year bilingual master program in health economics. It delivers a comprehensive study program for those interested in an academic career in health economics and prepares graduates for leading positions in the health care system. Academic lectures and seminars covering a range of different topics in health and health care economics are given alongside courses providing state-of-the-art knowledge of empirical methods. Several CINCH members are actively involved in teaching for the GÖMIK master. Students benefit from this because they experience teaching at high international standards and become familiar with CINCH.



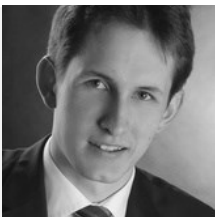
RUHR GRADUATE SCHOOL IN ECONOMICS

Ruhr Graduate School in Economics (RGS - Econ) is a graduate school in economics, founded by three universities in the Ruhr Area (Bochum, Dortmund and Duisburg-Essen) together with the RWI, one of Germany's leading economic research institutes.

Over three years graduate students receive guidance that leads to a Ph.D. in economics, complying with the highest international standards. CINCH holds vital and close connections to the RGS - Econ. Through this collaboration additional young academics become associated with CINCH.



Currently 5 graduate students from the RGS - Econ are associated with CINCH:



Simon Decker, M.Sc.

Cohort of 2011



Martin Fisher, Dipl.-Ök.

Cohort of 2011



Matthias Westphal, M.Sc.

Cohort of 2013



Alessandro Terracina, M.Sc.

Cohort of 2013



Maryna Ivets, M.Sc.

Cohort of 2014

Junior research groups and projects



EMPIRICAL ANALYSIS IN HEALTH CARE MARKETS

The junior research group empirically analyzes competition among providers and payers in the different tiers of the German health care system.

EACH

Junior research group



Jun.-Prof. Dr. Daniel Avdic



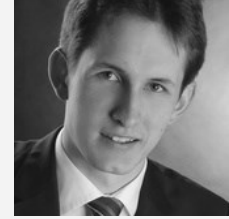
Christoph Kronenberg, M.Sc.



Ieva Sriubaite, M.Sc.



Maryna Ivets, M.Sc.



Simon Decker, M.Sc.

Junior research group leader

Determinants of Sickness Fund Choice and Health Consumption in the Two-Tiered German Health Insurance Market

The project attempts to empirically disentangle which factors are relevant for competition in the German Health insurance system. One focus is on the determinants of switching between and within insurances. Another focus is on how various insurance plan incentives with non-linear prices affect present and future consumption of health care.

Interdependence and Competition across and within In- and Outpatient Health Care Sectors

The project empirically analyzes various competition aspects of the interconnectedness between health care providers in Germany. Regional competition between inpatient health care providers with respect to quality information and local market structure is studied. Other topics include regulations, drug prescriptions and referral behavior of physicians.

HEALTH CARE MARKETS

The junior research group HCM applies the experimental method to analyze preferences and behavior of providers and consumers in healthcare markets.

HCM

Junior research group



Jun.-Prof. Dr. Nadja Kairies Schwarz

Junior research group leader



Bora Kim, M.Sc.



Johann Han, M.Sc.

Insurance Choice Behavior and Risk Preferences

In a laboratory experiment, we analyze consumers' tastes in typical contract attributes such as deductibles and complementary insurance and investigate their relationship with individual risk preferences according to cumulative prospect theory. We find that decision quality depends on individual behavior of dealing with the complex task of choosing health insurance and the plurality of cumulative prospect theory preferences. Controlling for the framing, we find more subjects with consistent choices and thus significantly better decision quality under a health frame than under a neutral one.

Competition and Mergers in the Hospital Market

Based on a Salop model, we investigate quality provision of competing hospitals before and after a merger. For this, we use a laboratory market experiment where subjects decide on the level of treatment quality. We observe a significant decrease in average market quality post-merger. However, average quality provision is still significantly higher than predicted for pure profit maximizing hospitals, which is potentially driven by altruistic behavior towards patients. Furthermore, we find that sufficient cost synergies due to a merger will

Individual Altruism and Team Decisions - An Experiment on Hospital Competition and Mergers

We analyze strategic interactions in the emergence of market quality in health care markets. In a controlled laboratory experiment modelling a Salop economy, we let subjects decide on quality in teams employing a majority rule while competing in symmetric and asymmetric markets. A substantial share of subjects reveals altruistic preferences in the voting process combined with high assertiveness, which reflects on the market outcome. The effect dilutes with increasing market asymmetry.

Forward Looking Behavior and Health Care Utilization

Health insurance policies can induce non-linear prices for healthcare, e.g. in case of deductibles. Whether individuals anticipate future changes in the price and how strong they react to them is likely determined by their time and risk preferences. We use a controlled laboratory experiment to analyze the reaction to changes in future prices caused by different determinants while holding the spot price constant. Furthermore, we elicit individual risk and time preferences and relate them to the observed spending patterns to gain behavioral insights.

PAY FOR PERFORMANCE

The project P4P applies methods of experimental economics to study the behavior of actors in health care, particularly of independent physicians and patients. By conducting laboratory experiments not only with student subjects but also with physicians themselves, a thorough understanding of physician preferences can be achieved.

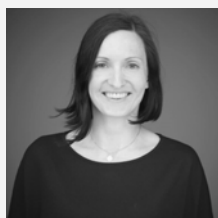
P4P

Project



Prof. Dr. Jeannette Brosig-Koch

Project leader



Johanna Kokot, Dipl.-Vw.



Lisa Einhaus, M.A.

Quality Information and Choice of Physician

This project focuses on the question what kind of quality information patients seek when choosing a physician. In particular, it experimentally investigates how different kinds of quality information, e.g. objective information (such as quality reports) or subjective information (such as review websites) influence a patient's choice of physician.

Monetary Incentives in Physician Teams

In this project we turn to medical care provided by physician teams. By means of a laboratory experiment, the project focuses on the question how each team member's remuneration should be designed in order to guarantee a high quality of medical care. How can team incentives be set into relation to each individual's performance within the team? How does introducing asymmetric incentives affect the quality of care provided by the entire team?

Suitable Forms of Physician Team Organization

The relationship between different forms of physician team organization and the quality of medical care is at the heart of this project. It experimentally investigates how physician teams need to be organized in order to - as suggested by many reforms - lead to improvements in the quality of care.

RISK ADJUSTMENT IN HEALTH INSURANCE

The project RAHI analyzes insurer competition under premium regulation.

RAHI

Project



uni DUE

Prof. Dr. Jürgen Wasem

Project leader



uni DUE

Dr. rer. pol. Sonja Schillo



Prof. Dr. Florian Buchner

A risk adjustment scheme was introduced in Germany in order to eliminate or mitigate risk selection by insurers. Risk adjustment ensures fair competition and fosters the efficient provision of health care. The project's objective is to identify the optimal risk factors for the risk adjustment scheme.

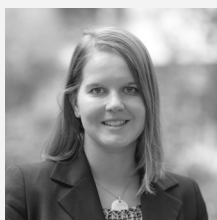
The project will be carried out in cooperation with Prof. Dr. Florian Bucher M.P.H. of Kärnten University of Applied Sciences.

EMPIRICAL HEALTH CARE MANAGEMENT

The project empirically analyzes the market access of health technologies, the role of innovation and the effects of regulated health care markets on agent behavior.

EHCM

Project



Uni DUE / Frank Preuß

Jun-Prof. Dr. Katharina Fischer

Project leader



Uni DUE / Frank Preuß

Frederike Arndt, M.Sc.

Utilization and adoption of pharmaceuticals by physicians of ambulatory care

Physicians are typically faced with a multitude of influences when making choices to prescribe pharmaceuticals to patients. In this project, we study the role of information and regulation on utilization and adoption of health technology products. We account for different product types (e.g., new products, biosimilars, generics). We use econometric analyses to study the effects of varying information signals (reimbursement decisions) and the role of regulation (e.g., quotas, budgets) at different levels of the health care system.

Early benefit assessment of innovative pharmaceuticals according to AM-NOG in Germany: empirical analysis of the decision-making process

By introducing the Act on the Reform of the Market for Medicinal Products (Arzneimittelmarktneuordnungsgesetz) in 2010, the regulatory framework for pharmaceuticals has changed for Germany. Manufacturers need to demonstrate a product's health benefit and must negotiate prices accordingly. We aim to identify factors that determine the decision on added health benefit and prices. We differentiate between the quality of evidence, its presentation, technological characteristics, and process related aspects. We use a database of decisions and perform econometric analyses.

Collaborating institution: Hamburg Center for Health Economics, University of Hamburg

The impact of biomedical innovation on medication non-adherence

Medication non-adherence has been identified as substantial source of waste across health care systems. In this project, we study the influence of pharmaceutical innovation on adherence behavior in the working population in Germany and the United States. We focus on analyses of chronic conditions using real world data on drug utilization.

Collaborating institution: Columbia Business School, Columbia University, DocMorris

DEMAND AND COMPETITION IN LONG-TERM CARE

The project DCLTC empirically analyzes the German market for long-term care, in particular demand for and competition in quality and prices across nursing homes and ambulatory care.

DCLTC

Project



Jun.-Prof. Dr. Annika Herr

Project leader



Amela Saric, M.A.

What explains the regional differences in the utilization of nursing home services in Germany?

In this project, we look at the regional variation in the utilization of nursing home services in Germany. Most of the observed variation is captured through regionally different care giving needs, and a range of demographic, structural and supply-side factors. Yet, part of it remains unexplained. Policy-makers may therefore need to pursue measures to enhance the efficiency of resource use, primarily by stimulating the use of alternative forms of care and regulating the expansion of nursing home capacities.

The welfare effects of single rooms in German nursing homes: A structural approach

This project evaluates the welfare effects of a single room policy in German nursing homes. We estimate a structural model of demand and, based on a model of bargaining between providers and payers, simulate price and demand effects of transforming double bed rooms into single rooms. We find that the welfare effects are positive (negative) if the total nursing home capacities remain unchanged (decrease). This policy should therefore be accompanied by investments into new nursing homes to maintain the number of plac-

EIB. LONG-TERM CARE IN EUROPE

This project investigates various dimensions of long-term care (LTC) in Europe. The results will provide new insights into how to keep LTC systems affordable, fair, and efficient. The project is funded by the European Investment Bank (EIB).

EIB

Project



Prof. Dr. Martin Karlsson

Principal Investigator



Dr. Sarah Okoampah

Coordination



Dr. Dörte Heger

RWI / Julica Bracht



Ingo Kolodziej, M. Sc.

RWI / Julica Bracht



Prof. Dr. Ansgar Wübker

RWI / Julica Bracht

Assessment of Future LTC Needs

This subproject aims at projecting the future demand for LTC and associated costs based on European data sources. The project will generate comprehensive knowledge of the future challenges of LTC provision within Europe.

Evaluating Policy Reforms in the LTC Sector

In this subproject, recent LTC reforms in Europe are evaluated regarding the effectiveness of their components. The results will allow an assessment of which reform features can be expected to have desirable impacts, delivering valuable implications for future LTC policies.

Care Provision in a Changing Society

This subproject explores the effects of demographic ageing and societal trends on morbidity, the choice between formal and informal care alternatives, and on the situation of informal carers. The aim is to understand how care needs and care provision are influenced by demographic and societal factors and to infer policy recommendations on how to respond to the new requirements.

LEIBNIZ SCIENCE CAMPUS RUHR

Leibniz Science Campus Ruhr (LSCR) is a research collaboration focussed on “Health care challenges in regions with declining and ageing populations”. It aims to analyze the causes and consequences of regional differences in health care, deriving policies and evaluating selected measures to improve the efficiency of health-care provision.



Prof. Dr. Ansgar Wübker
(RWI)

RWI / Julica Bracht



Prof. Dr. Jürgen Wasem
(UDE)



Prof. Dr. Martin Karlsson
(UDE)



Prof. Dr. Thomas Bauer
(RWI)

RWI / Julica Bracht



Dr. Martin Salm
(Tilburg University)

Sustainability of Supply

By introducing the Act on the Reform of the Market for Medicinal Products in 2010, the regulatory framework for pharmaceuticals has changed for Germany. Manufacturers need to demonstrate a product's health benefit and must negotiate prices accordingly. We aim to identify factors that determine the decision on added health benefit and prices. We differentiate between the quality of evidence, its presentation, technological characteristics, and process related aspects. We use a database of decisions and perform econometric analyses.

Collaborating institution: Hamburg Center for Health Economics, University of Hamburg

Regional Variations in Health Care

The demand and supply of health care displays large regional variation. The LSCR studies the reasons of this variation and assesses its consequences for health policy.

Prevention

Given that health-care resources are dwindling, one way to maintain high quality health care is reducing demand. In this context disease prevention and understanding the demand for health care is becoming increasingly important.

LSCR combines the long-standing health economic expertise of the RWI – Leibniz Institute of Economic Research, the University of Duisburg-Essen, and Tilburg University and creates the first research community in Germany to focus on health care in demographically declining regions. It is funded by the Leibniz Association and exhibits a vivid network of external partners (AOK-NORDWEST, DRV-Westfalen, Maternus-Klinik Bad Oeynhausen, and WINEG) who collaborate in the ScienceCampus to form a strong regional network and foster research across disciplinary boundaries (e.g. economics, medicine, and rehabilitation science).

Publications



PEER-REVIEWED PUBLICATIONS

- Ahlert, M., Felder, S. and B. Vogt, 2012. Which patients do I treat? An experimental study with economists and physicians. *Health Economics Review*, 2(1), 1-11.
- Aidelsburger, P., Grabein, K., Böhm, K., Diel, M., Wasem, J., Koch, J., Ultsch, B., Weidemann, F. and O. Wichmann, 2014. Cost-effectiveness of Childhood Rotavirus Vaccination in Germany. *Vaccine*, 32(17), 1964-1974. DOI 10.1016/j.vaccine.2014.01.061.
- Aidelsburger, P., Schauer, S., Grabein, K. and J. Wasem, 2012. Alternative Methoden zur Behandlung postmenopausaler Beschwerden. *Health Technology Assessment*, Band 118, DIMDI, Köln, 1-5.
- Aidelsburger, P., Schauer, S., Grabein, K. and J. Wasem, 2012. Alternative Methoden zur Behandlung postmenopausaler Beschwerden. *Schriftenreihe Health Technology Assessment*, DIMDI, Köln, 118, 1-165. DOI: 10.3205/hta000101L.
- Augurzky, B., Kopetsch, T. and H. Schmitz, 2013. What accounts for the regional differences in the utilisation of hospitals in Germany? *European Journal of Health Economics*, 14(4), 615-627.
- Avdic, D. and M. Gartell, 2015. Working While Studying? Student Aid Design and Socioeconomic Achievement Disparities in Higher Education. *Labour Economics*, 33, 26-40.
- Avdic, D. and M. Karlsson, 2016. Growth in Earnings and Health: Nothing is as Practical as a Good Theory. *Review of Income and Wealth*, DOI:10.1111/roiw.12243.
- Avdic, D. and P. Johansson, 2016. Absenteeism, Gender and The Morbidity-Mortality Paradox. *Journal of Applied Econometrics*, DOI: 10.1002/jae.2516.
- Avdic, D., 2016. Improving Efficiency or Impairing Access? Health Care Consolidation and Quality of Care: Evidence from Emergency Hospital Closures in Sweden. *Journal of Health Economics*, 48, 44-60.
- Behl, P., Dette, H., Frondel, M. and H. Tauchmann, 2012. Choice is Suffering: A Focused Information Criterion for Model Selection. *Economic Modelling Selection*. *Economic Modelling*, 29(3), 817-822.
- Behl, P., Dette, H., Frondel, M. and H. Tauchmann, 2013. Energy Substitution: When Model Selection depends on the Focus. *Energy Economics*, 39, 233-238.
- Bhalotra, S.R., Karlsson, M. and T. Nilsson, 2017. Infant Health and Longevity. Evidence from a Historical Trial in Sweden. Forthcoming in *Journal of the European Economic Association*.
- Biermann, J., Horack, M., Kahlert, P., Schneider, S., Nickenig, G., Zahn, R., Senges, J., Erbel, R., Wasem, J. and T. Neumann, 2015. The impact of transcatheter aortic valve implantation on quality of life: results from the German transcatheter aortic valve interventions registry. *Clinical Research in Cardiology*, 104(10), 877-886. DOI: 10.1007/s00392-015-0857-9.
- Biermann, J., Merk, H. F., Wehrmann, W., Klimek, L. and J. Wasem, 2013. Allergic disorders of the respiratory tract — findings from a large patient sample in the German statutory health insurance system. *Allergo Journal*, 22(6), 366-373.
- Biermann, J., Neumann, T., Angermann, C.E., Dungen, H.D., Erbel, R., Herzog, W., Maisch, B., Müller-Tasch, T., Özcelik, C., Pankuweit, S., Pieske, B., Pittrow, D., Regnitz-Zagrosek, R., Scheffold, T., Störk, S., Wachter, R., Gelbrich, G., Wasem, J. and A. Neumann, 2012. Resource use and costs in systolic heart failure according to disease severity: a pooled analysis from the German Competence Network Heart Failure. *Public Health*, 20, 23-30.
- Biermann, J., Neumann, T., Angermann, C.E., Erbel, R., Maisch, B., Pittrow, D., Regitz-Zagrosek, V., Scheffold, T., Wachter, R., Gelbrich, G., Wasem, J. and A. Neumann, 2012. Economic burden of patients with various etiologies of chronic systolic heart failure analyzed by resource use and costs. *International Journal of Cardiology*, 156(3), 323-325.
- Biester, K., Skipka, G., Jahn, R., Buchberger, B., Rohde, V. and S. Lange, 2012. Systematic review of surgical treatments for benign prostatic hyperplasia and presentation of an approach to investigate therapeutic equivalence (non-inferiority). *British Journal of Urology International*, 109(5), 722-730.
- Bolton, G.E. and J. Brosig-Koch, 2012. How do coalitions get built? Evidence from an extensive form coalition game with and without communication. *International Journal of Game Theory*, (41), 623-649.
- Brosig-Koch, J. and T. Heinrich, 2014. Reputation and mechanism choice in procurement auctions: An experiment. *Production and Operations Management*, 23(2), 210-220.
- Brosig-Koch, J., Heinrich, T. and C. Helbach, 2014. Does truth win when teams reason strategically? *Economics Letters*, 123(1), 86-89.
- Brosig-Koch, J., Heinrich, T. and C. Helbach, 2015. Exploring the capability to reason backwards: An experimental study with children, adolescents, and young adults. *European Economic Review*, 74, 286-302.
- Brosig-Koch, J., Hennig-Schmidt, H., Kairies-Schwarz, N. and D. Wiesen, 2016. Using artefactual field and lab experiments to investigate the effect of fee-for-service and capitation on medical service provision. *Journal of Economic Behavior & Organization*, 131, 17-23.

- Brosig-Koch, J., Hennig-Schmidt, H., Kairies-Schwarz, N. and D. Wiesen, 2017. The Effects of Introducing Mixed Payment Systems for Physicians: Experimental Evidence. *Health Economics*, 26(2), 243-262. DOI: 10.1002/hec.3292.
- Buchberger, B., Huppertz, H., Krabbe, L., Lux, B., Mattivi, J.T. and A. Sifarakas, 2016. Symptoms of depression and anxiety in youth with type 1 diabetes: A systematic review and meta-analysis. *Psychoneuroendocrinology*, 70, 70-84.
- Buchberger, B., Krabbe, L., Lux, B. and J.T. Mattivi, 2016. Evidence mapping for decision making: feasibility versus accuracy – when to abandon high sensitivity in electronic searches. *GMS German Medical Science*, 14, DOI:10.3205/000236.
- Buchberger, B., von Elm, E., Gartlehner, G., Huppertz, H., Wasem, J., Antes, G. and J.J. Meerpohl, 2014. Bewertung des Risikos für Bias in kontrollierten Studien. *Bundesgesundheitsblatt - Gesundheitsforschung - Gesundheitsschutz*, 57(12), 1432-1438.
- Buchner, F., Göppfarth, D. and J. Wasem, 2012. The new risk adjustment formula in Germany: Implementation and first experiences. *Health Policy*, 109, 253-262. DOI: 10.1016/j.healthpol.2012.12.001.
- Buchner, F., Wasem, J. and S. Schillo, 2015. Regression trees identify relevant interactions: Can this improve the predictive performance of risk adjustment? *Health Economics*, DOI: 10.1002/hec.3277.
- Bünnings, C. and H. Tauchmann, 2015. Who Opts Out of the Statutory Health Insurance? A Discrete Time Hazard Model for Germany. *Health Economics*, 24(10), 1331-1347.
- Bünnings, C., Kleibrink, J. and J. Weßling, 2017. Fear of Unemployment and its Effect on the Mental Health of Spouses. *Health Economics*, 26(1), 104-117. DOI: 10.1002/hec.3279.
- Büyükdürmus, T., Kopetsch, T., Schmitz, H. and H. Tauchmann, 2016. On the Interdependence of Ambulatory and Hospital Care in the German Health System. Forthcoming in *Health Economics Review*.
- Costa-i-Font, J., Karlsson, M. and Ø. Henning, 2016. Careful in the Crisis? Determinants of Older People's Informal Care Receipt in Crisis-Struck European Countries. *Health Economics*, 25(S2), 25-42. DOI: 10.1002/hec.3385.
- Coupe, T. and M. Obrizan, 2016. The Impact of War on Happiness: the Case of Ukraine. *Journal of Economic Behavior & Organization*, 132, 228-242.
- Decker, S. and H. Schmitz, 2016. Health Shocks and Risk Aversion. *Journal of Health Economics*, 50, 156–170.
- Duso, T., Herr, A. and M. Suppliet, 2014. The welfare impact of parallel imports: A structural approach applied to the German market for oral anti-diabetics. *Health Economics*, 23(9), 1036–1057.
- Felder, S. and A. Herr, 2013. Competent in Competition and Health: Das gesundheitsökonomische Forschungszentrum CINCH. *Public Health Forum*, 21(4), 25.e1–25.e3.
- Felder, S. and M. Krieger, 2013. Can Decision Biases Improve Insurance Outcomes? An Experiment on Status Quo Bias in Health Insurance Choice. *International Journal of Environmental Research and Public Health*, 10(6), 2560-2577.
- Felder, S. and T. Mayrhofer, 2013. Eine vergleichende Kostenanalyse von sechs Anticholinergika zur Behandlung der überaktiven Blase und Inkontinenz in Deutschland. *PharmacoEconomics – German Research Articles*, 11(2), 65-76. DOI:10.1007/s40275-014-0005-6.
- Felder, S. and T. Mayrhofer, 2014. Risk Preferences: Consequences for Test and Treatment Thresholds and Optimal Cut-offs. *Medical Decision Making*, 34(1), 33-41.
- Felder, S. and Tauchmann, H., 2013. Federal state differentials in the efficiency of health production in Germany: an artifact of spatial dependence? *European Journal of Health Economics*, 14, 21-39.
- Felder, S., 2012. A wise and just decision, comment on the Swiss Supreme Court ruling on Myozyme. *Bioethica Forum*, 4(3), 2.
- Fischer, K.E., Heisser, T. and T. Stargardt, 2016. Health benefit assessment of pharmaceuticals: An international comparison of decisions from Germany, England, Scotland and Australia. *Health Policy*, 120(10), 1115-1122. DOI: 10.1016/j.healthpol.2016.08.001.
- Follmann, M., Schadendorf, D., Kochs, C., Buchberger, B., Winter, A. and S. Wesselmann, 2014. Quality assurance for care of melanoma patients based on guideline-derived quality indicators and certification. *Journal der Deutschen Dermatologischen Gesellschaft*, 12(2), 139-47.
- Göppfarth D., Kopetsch, T. and H. Schmitz, 2016. Determinants of regional variation in health expenditures in Germany. *Health Economics*, 25(7), 801–815.
- Groß, M., Herr, A., Hower, M., Kuhlmann, A., Mahlich, J. and M. Stoll, 2015. Unemployment, health, and education of HIV-infected males in Germany. *International Journal of Public Health*, 61(5), 593-602. DOI: 10.1007/s00038-015-0750-3.
- Haucap, J. and A. Herr, 2014. A note on social drinking: In vino veritas. *European Journal of Law and Economics*, 37(3), 381-392.
- Haucap, J., Herr A. and B. Frank, 2014. Social drinking versus administering alcohol. *Economic Inquiry*, 52, 1245-1247.
- Herr, A. and H. Hottenrott, 2016. Higher prices, higher quality? Evidence from German nursing homes. *Health Policy*, 120(2), 179-89. DOI: 10.1016/j.healthpol.2016.01.008.
- Herr, A. and H.-T. Normann, 2015. Organ donation in the lab: Preferences and votes on the priority rule. *Journal of Economic Behavior & Organization*, 131, 139-149. DOI: 10.1016/j.jebo.2015.09.001.

- Herr, A., 2016. Wettbewerb und Rationalisierung im deutschen Arzneimittelmarkt: Ein Überblick. *ListForum für Wirtschafts- und Finanzpolitik*, 39(2), 163-181.
- Herr, A., Nguyen T. and H. Schmitz, 2016. Public Reporting and the Quality of Care of German Nursing Homes. *Health Policy*, 120 (10), 1162-1170.
- Hostenkamp, G., Fischer, K.E. and K. Borch-Johnsen, 2016. Drug safety and the impact of drug warnings: an interrupted time series analysis of diabetes drug prescriptions in Germany and Denmark. *Health Policy*, 120(12), 1404-1411. DOI: 10.1016/j.healthpol.2016.09.020.
- Hunger, T., Schnell-Inderst, P., Hintringer, K., Schwarzer, R., Seifert-Klauss, V., Gothe, H., Wasem, J. and U. Siebert, 2014. Health technology assessment of utilization, practise and ethical issues of self-pay services in the German ambulatory health care setting. *International Journal of Public Health*, 59(1), 175-187.
- Ivanovic, S., Weegen, L., Korff, L., Jahn, R., Walendzik, A., Mostardt, S., Wasem, J. and A. Neumann, 2015. Effektivität und Kosteneffektivität von Versorgungsmanagement-Programmen bei Multipler Sklerose in Deutschland – eine Übersichtsarbeit. *Aktuelle Neurologie*, 42(9), 503-508.
- Jacobs, C., Pfaff, H., Lehner, B., Driller, E., Nitzsche, A., Stieler-Lorenz, B., Wasem, J. and J. Jung, 2013. The influence of transformational leadership on employee well-being. Results from a survey of companies in the information and communication technology sector in Germany. *Occupational and Environmental Medicine*, 55(7), 772-778. DOI 10.1097/JOM.0b013e3182972ee5.
- Jahn, R., Schillo, S. and J. Wasem, 2012. Morbiditätsorientierter Risikostrukturausgleich. *Bundesgesundheitsblatt*, 55, 624-632.
- Kairies-Schwarz, N., 2013. Pay-for-Performance, Reputation, and the Reduction of Costly Overprovision. *Economics Bulletin*, 33(3), 211.
- Kamhöfer, D. and H. Schmitz, 2016. Reanalyzing Zero Returns to Education in Germany. *Journal of Applied Econometrics*, 31(5), 912-919.
- Karlsson, M. and F. Klohn, 2014. Testing the red herring hypothesis on an aggregated level: ageing, time-to-death and care costs for older people in Sweden. *European Journal of Health Economics*, 15(5), 533-551. DOI:10.1007/s10198-013-0493-0.
- Karlsson, M. and N. Ziebarth, 2014. The Effects of Expanding the Generosity of the Statutory Sickness Insurance System. *Journal of Applied Econometrics*, 29(2), 208-230.
- Karlsson, M. and P. Pichler, 2015. Demographic Consequences of HIV. *Journal of Population Economics*, 28(4), 1097-1135. DOI:10.1007/s00148-015-0547-y.
- Karlsson, M., Klein, T. and N.R. Ziebarth, 2016. Skewed, Persistent and High before Death: Medical Spending in Germany. *Fiscal Studies; Journal of Applied Public Economics*, 37, 527-559. DOI:10.1111/j.1475-5890.2016.12108.
- Karlsson, M., Nilsson, T. and S. Pichler, 2014. The Impact of the 1918 Spanish Flu Epidemic on Economic Performance in Sweden. *Journal of Health Economics*, 36, 1-19.
- Kerkemeyer, L., Mostardt, S., Biemann, J., Wasem, J., Neumann, A., Walendzik, A., Jahn, R., Bartels, C., Falkai, P., Brannath, W., Breunig-Lyriti, V., Mester, B., Timm, J. and T. Wobrock, 2015. Evaluation of an integrated care program for schizophrenia – concept and study design. *European Archives of Psychiatry and Clinical Neuroscience*, 265(2), 155-162. DOI: 10.1007/s00406-014-0508-6.
- Kokot, J., 2014. Die experimentelle Methodik in der Gesundheitsökonomik. In: Matusiewicz, D. and J. Wasem: *Gesundheitsökonomie – Bestandsaufnahme und Entwicklungsperspektiven*, Schriften der Gesellschaft für Sozialen Fortschritt e.V. (GSF), Band 30, 51-68.
- Kopetsch, T. and H. Schmitz, 2013. Regional variation in the utilisation of ambulatory services in Germany. *Health Economics*, 23(12), 1481-1492.
- Kronenberg, C., Doran T., Goddard, M., Kendrick T., Gilbody S., Owen S., Aylott L., and R. Jacobs, 2017. Quality indicators for primary care of people with serious mental illness: A systematic review Forthcoming in *British Journal of General Practice*
- Kvasnika, M. and H. Tauchmann, 2012. Much Ado About Nothing? Smoking Bans and Germany's Hospitality Industry. *Applied Economics*, 44(35), 4539-4551.
- Lange, M. R. J. and A. Saric, 2016. Substitution between fixed, mobile and voice over IP telephony - Evidence from the European Union. *Telecommunications Policy*, 40(10-11), 1007-1019.
- Lehner, B.S., Jung, J., Stieler-Lorenz, B., Nitzsche, A., Driller, E., Wasem, J. and H. Pfaff, 2013. Psychosocial factors in the information and communication technology sector. *Management Decision*, 51(9), 1878-1892.
- Matusiewicz, D., Brüggemann, F. and J. Wasem, 2012. Effekte des Zusatzbeitrages auf das Management gesetzlicher Krankenkassen. *Zeitschrift für die gesamte Versicherungswirtschaft*, 101, 31-44.
- Matusiewicz, D., Körber, A., Schadendorf, D., Wasem, J. and A. Neumann, 2012. Psoriasis im Kindes- und Jugendalter – eine bundesweite Ärztebefragung zur Versorgungssituation in Deutschland. *Der Hautarzt*, 10, 801-807. DOI: 10.1007/s00105-012-2431-y.
- Matusiewicz, D., Körber, A., Schadendorf, D., Wasem, J. and A. Neumann, 2013. Childhood Psoriasis – an analysis of German health insurance data. *Pediatric Dermatology*, 31, 8-13. DOI: 10.1111/pde.12205.
- Matusiewicz, D., Neumann, A., Wasem, J. and G. Lux, 2014. Kostenstudie zur Familiären Amyloid Polyneuropathie (FAP) mit Routinedaten der Gesetzlichen Krankenversicherung – Methodik und Analyse. *Gesundheitsökonomie und Qualitätsmanagement*, 19 (5), 217-223. DOI: 10.1055/s-0033-1355527.

- Matusiewicz, D., Stollmeier, H., Wasem, J. and T. Bischof, 2013. Vom Payer zum Player zum Partner. Eine gezielte Provokation zur Vorstellung eines Marketingansatzes für die Postmoderne. *Sozialer Fortschritt*, 62, 87-94.
- Matusiewicz, D., Wasem, J., Stollmeier, H. and T. Bischof, 2013. Rahmenbedingungen und Überblick über den Stand der betriebswirtschaftlichen Forschung. *Sozialer Fortschritt*, 62, 299-305.
- Matusiewicz, D., Körber, A., Schadendorf, D., Leister, L., Wasem, J. and A. Neumann, 2013. Juvenile Psoriasis – Versorgungssituation und Lebensqualität in Deutschland. *Gesundheitsökonomie und Qualitätsmanagement*, 18, 1-8.
- Mayer, F., Stahrenberg, R., Gröschel, K., Mostardt, S., Biermann, J., Edelmann, F., Liman, J., Wasem, J., Göhler, A., Wachter, R. and A. Neumann, 2012. Cost-effectiveness of seven day Holter monitoring alone or in combination with transthoracic echocardiography in patients with cerebral ischemia. *Clinical Research in Cardiology*, 102, 875-884. DOI: 10.1007/s00392-013-0601-2.
- Mennicken, R., Augurzky, B., Rothgang, H. and J. Wasem, 2014. Explaining differences in remuneration rates of nursing homes in Germany. *European Journal of Health Economics*, 15, 401-410. DOI: 10.1007/s10198-013-0483-2.
- Mostardt, S., Matusiewicz, D., Schröder, W., Wasem, J. and A. Neumann, 2012. Wirksamkeit und Kostenwirksamkeit eines Case-Management-Programms bei Patienten mit Demenz. *Zeitschrift für Gerontologie und Geriatrie*, 45, 1-5.
- Neumann, A., Mostardt, S., Biermann, J., Gelbrich, G., Göhler, A., Geisler, B.P., Siebert, U., Störk, S., Ertl, G., Angermann, C.E. and J. Wasem, 2015. Cost-Effectiveness and Cost-Utility of a Structured Collaborative Disease Management in the Interdisciplinary Network for Heart Failure (IHN) Study. *Clinical Research in Cardiology*, 104(4), 304-309. DOI: 10.1007/s00392-014-0781-4.
- Noweski, M., Walendzik, A., Hessel, F., Jahn, R. and J. Wasem, 2013. Zulassung und Erstattung personalisierter Arzneimittel: Zwischenbilanz des Anpassungsprozesses. *Ethik in der Medizin*, 25, 277-284. DOI: 10.1007/s00481-013-0270-8.
- Øien, H., Karlsson, M. and T. Iversen, 2012. The Impact of Financial Incentives on the Composition of Long-term Care in Norway. *Applied Economic Perspectives*, 34(2), 258-274.
- Paloyo, A., Reichert, A., Reineremann, H. and H. Tauchmann, 2014. The Causal Link between Financial Incentives and Weight Loss: An Evidence Based Survey of the Literature. *Journal of Economic Surveys*, 28(3), 401-420.
- Paloyo, A., Reichert, A.R., Reuss-Borst, M. and H. Tauchmann, 2015. Who responds to financial incentives for weight loss? Evidence from a randomized controlled trial. *Social Science & Medicine*, 145, 44-52.
- Peters, J., Sievert, M. and C. Strupat, 2015. Impacts of a Micro-Enterprise Clustering Program on Firm Performance in Ghana. *European Journal of Development Research*, 27(1), 99-121. DOI: 10.1057/ejdr.2014.18.
- Peters, J., Strupat, C. and C. Vance, 2014. Television and Contraceptive use – A Weak Signal? *Journal of Development Studies*, 50 (11), 1538-1549.
- Port, M., Böttcher, M., Thol, F., Ganser, A., Schlenk, R., Wasem, J., Neumann, A. and L. Pouryamout, 2014. Prognostic significance of FLT3 internal tandem duplication, nucleophosmin 1, and CEBPA gene mutations for acute myeloid leukemia patients with normal karyotype and younger than 60 years: a systematic review and meta-analysis. *Annals of Hematology*, 93(8), 1279-86. DOI: 10.1007/s00277-014-2072-6.
- Port, M., Böttcher, M., Thol, F., Trachte, N., Wasem, J., Ganser, A., Pouryamout, L. and A. Neumann, 2013. Individualisierte Medizin in der Diagnostik und prognostischen Einschätzung in der akuten myeloischen Leukämie mit normalem Karyotyp bei Erwachsenen unter 65 Jahren: eine systematische Literaturrecherche und Metaanalyse zu FLT3-ITD. *Ethik in der Medizin*, 25, 183-193. DOI: 10.1007/s00481-013-0271-7.
- Pouryamout, L., Dams, J., Wasem, J., Dodel, R. and A. Neumann, 2012. Economic evaluation of treatment options in patients with Alzheimer's disease: a systematic review of cost-effectiveness analyses. *Drugs*, 72(6), 789-802.
- Reichert, A. and H. Tauchmann, 2014. When Outcome Heterogeneously matters for Selection: A Generalized Selection Correction Estimator. *Applied Economics*, 46(7), 762-768.
- Reichert, A., Augurzky, B. and H. Tauchmann, 2015. Self-perceived job insecurity and the demand for medical rehabilitation: does fear of unemployment reduce health care utilization? *Health Economics*, 24(1), 8-25. DOI: 10.1002/hec.2995.
- Reifferscheid, A., Pomorin, N. and J. Wasem, 2015. Ausmaß von Rationierung und Überversorgung in der stationären Versorgung – Ergebnisse einer bundesweiten Umfrage in deutschen Krankenhäusern. *Deutsche Medizinische Wochenschrift*, 140(13), 129-135.
- Reifferscheid, A., Pomorin, N. and J. Wasem, 2016. Pflegerische Versorgungsdefizite in deutschen Krankenhäusern – Ergebnisse einer bundesweiten Befragung von Krankenhaus-Leitungspersonen. *Das Gesundheitswesen*, 78(S 01), 97-102.
- Reissner, V., Jost, D., Krahn, U., Knollmann, M., Weschenfelder, A.-K., Neumann, A., Wasem, J. and J. Hebebrand, 2015. The treatment of school avoidance in children and adolescents with psychiatric illness - a randomized controlled trial. *Deutsches Ärzteblatt International*, 112, 655-662.
- Reuss-Borst, M., Peters, E., Paloyo, A., Reichert, A. and H. Tauchmann, 2015. Finanzielle Anreize zur Gewichtsreduktion nach stationärer Rehabilitation – Ergebnisse einer großen prospektiven randomisierten Studie. *Versicherungsmedizin*, (67), 64-69.
- Schiele, V. and H. Schmitz, 2016. Quantile treatment effects of job loss on health. *Journal of Health Economics*, 49, 59-69.
- Schillo, S., Lux, G., Wasem, J. and F. Buchner, 2016. High cost pool or high cost groups - how to handle high(est) cost cases in a risk adjustment mechanism? *Health Policy*, 120(2), 141-147.

- Schmitz, H. and M. Westphal, 2015. Short- and Medium-term Effects of Informal Care Provision on Female Caregivers' Health. *Journal of Health Economics*, 42, 174–185.
- Schmitz, H. and N. Ziebarth, 2016. Does price framing affect the consumer price sensitivity of health plan choice? *Journal of Human Resources*, 51(4), 89-128.
- Schmitz, H., 2013. Health and the double burden of full-time work and informal care provision - Evidence from administrative data. *Labour Economics*, 24, 305-322.
- Schmitz, H., 2013. Practice budgets and the patient mix of physicians - The effect of a remuneration system reform on health care utilisation. *Journal of Health Economics*, 32(6), 1240-1249.
- Schmitz, H., 2014. Broke, ill, and obese: Is there an effect of household debt on health? *Review of Income and Wealth*, 60(3), 525-541.
- Schmitz, H., 2014. Testing the relationship between income inequality and life expectancy: A simple correction for the aggregation effect when using aggregated data. *Journal of Population Economics*, 27(3), 841-856.
- Schüller, D., Upmann, T., Tauchmann, H. and D. Weimar, 2014. Pro-Social behavior in the TV show "Come Dine with Me": An empirical investigation. *Journal of Economic Psychology*, 45, 44-55.
- Sittig, D.T., Friedel, H. and J. Wasem, 2015. Prevalence and treatment costs of type 2 diabetes in Germany and the effects of social and demographical differences. *European Journal of Health Economics*, 16(3), 305-311. DOI: 10.1007/s10198-014-0575-7.
- Tauchmann, H., 2012. Partial Frontier Efficiency Analysis. *Stata Journal*, 12(3), 461-478.
- Tauchmann, H., 2014. Lee (2009) Treatment effect Bounds for Non-random Sample Selection. *Stata Journal*, 14(4), 884-894.
- Tauchmann, H., Lenz, S., Requate, T. and C.M. Schmidt, 2013. Tobacco and Alcohol: Complements or Substitutes? *Empirical Economics*, 45(1), 539-566.
- Thomas, D., Borchert, M., Brockhaus, N., Jäschke, L., Schmitz, G. and J. Wasem, 2015. Dienstleistungsproduktivität in der Krankenhauspflege – Konzeptionelle Grundlagen einer Produktivitätsanalyse. *Das Gesundheitswesen*, 77(1), e1-e7. DOI: 10.1055/s-0033-1361151.
- Van de Ven, W., Beck, K., Buchner, F., Schokkaert, E., Schut, F.T., Shmueli, A. and J. Wasem, 2013. Preconditions for the efficiency and affordability in competitive healthcare markets: Are they fulfilled in Belgium, Germany, Israel, the Netherlands and Switzerland? *Health Policy*, 109, 226-245. DOI: 10.1016/j.healthpol.2013.01.002.
- Van der Linde, K., Wasem, J. and G. Lux, 2014. Sekundärdatenanalyse der Prävalenz der Alkoholabhängigkeit (F10.2) in Deutschland. *Deutsche Medizinische Wochenschrift*, 139, 2285-2289. DOI: 10.1055/s-0034-1387353.
- Walendzik, A., Rabe-Menssen, C., Lux, G., Wasem, J. and R. Jahn, 2014. Zur Versorgungslage im Bereich der ambulanten Psychotherapie – Ergebnisse einer Erhebung unter den Mitgliedern der Deutschen Psychotherapeutenvereinigung (DPTV). *Das Gesundheitswesen*, 76, 135-149.
- Walendzik, A., Trottmann, M., Leonhardt, R. and J. Wasem, 2013. Honorarverteilung – sollte die morbiditätsbedingte Gesamtvergütung auch morbiditätsadjustiert werden? *Das Gesundheitswesen*, 74 and 75, 225-233. DOI: 10.1055/s-0033-1311639.
- Wasem, J. and A. Walendzik, 2012. Reformvorschläge für ein einheitliches Versicherungssystem. *Wirtschaftsdienst*, 92, 659-662.
- Wasem, J., 2012. Absenkung des Rechnungszinses ist notwendig. *Versicherungswirtschaft*, 62, 807.
- Wasem, J., 2012. Die Crux mit der Budgetierung ärztlicher Leistungen. *Versicherungswirtschaft*, 67, 1589.
- Wasem, J., 2012. Fallzahl-Expansion in der Klinik. *Versicherungswirtschaft*, 67, 1190.
- Wasem, J., Augursky, B. and S. Felder, 2012. Neue Instrumente erforderlich. *ersatzkasse magazin*, 92, 30-31.
- Wasem, J., Bramlage, P., Gitt, A.K., Binz, C., Krekler, M., Deeg, E. and D. Tschöpe, 2013. Co-morbidity but not dysglycaemia reduces quality of life in patients with type-2 diabetes treated with oral mono- or dual combination therapy – an analysis of the DiaRegis registry. *Cardiovascular Diabetology*, 12, 47.
- Weschenfelder, A.-K., Wasem, J. and J. Biermann, 2015. Versorgung von Patienten mit allergischer Rhinitis – eine Analyse von Routinedaten einer gesetzlichen Krankenversicherung. *Allergologie*, 38(5), 252 - 259.

OTHER PUBLICATIONS

- Augurzy, B. and H. Schmitz, 2012. Wissenschaftliche Untersuchung zu den Ursachen unterschiedlicher Basisfallwerte der Länder als Grundlage der Krankenhausfinanzierung. Forschungsprojekt im Auftrag des Bundesministeriums für Gesundheit. RWI-Projektbericht, RWI für Wirtschaftsforschung, Essen, 1-101.
- Augurzy, B., Beivers, A., and H. Schmitz, 2012. Regionale Unterschiede in der stationären Versorgung: Das ländliche Krankenhaus im Fokus. In: Klauber, J., Geraedts, M., Friedrich, J. and J. Wasem : Krankenhaus-Report 2012. Schwerpunkt: Regionalität, Schattauer, Stuttgart, 19-32.
- Augurzy, B., Felder, S., Wasem, J., Gülker, H. and N. Siemssen, 2012. Mengenentwicklung und Mengensteuerung stationärer Leistungen. Endbericht. Forschungsprojekt im Auftrag des GKV-Spitzenverbandes. RWI-Projektbericht, RWI für Wirtschaftsforschung, Essen, 1-62.
- Augurzy, B., Roppel, U. and H. Schmitz, 2012. Kehrtwende in der Gesundheitspolitik - Unnötige Abkehr von einer erfolgreichen Reform zur Finanzierung der gesetzlichen Krankenversicherung. RWI Position, (59), 1-14.
- Bauer, C., Hunold, M., Hüschelrath, K., Jahn, R., Kotschedoff, M., Laitenberger, U., Lux, G., May, U., Walendzik, A., Wasem, J. and L. Weegen, 2015. Rabattvertragsausschreibungen in der Generikaindustrie in Deutschland, Auswirkungen auf Marktstruktur, Anbietervielfalt und Wettbewerb. Band 104, NOMOS Verlag, Baden-Baden.
- Biermann, J., Weschenfelder, A.-K. and S. Mostardt, 2016. Projektporträt Masterseminar Medizinmanagement: Wintersemester 2012/2013 – erste Erfahrungen im Bereich des Service-Learning. In: Altenschmidt, K. and W. Stark: Forschen und Lehren mit der Gesellschaft. Community Based Research und Service Learning an Hochschulen, Springerverlag,
- Biermann, J., Mostardt, S., Lux, G., Wasem, J., Dahl, H. and D. Matusiewicz, 2012. Erfahrungen aus Sozialmedizin und Gesundheitsökonomie. In: Swart, E., Ihle, P., Gothe, H. and D. Matusiewicz: Routinedaten im Gesundheitswesen. Handbuch Sekundäranalyse: Grundlagen, Methoden und Perspektiven, 2nd edition, Hans Huber, Bern, 446-459.
- Biermann, J., Neumann, A., Wasem, J. and S. Mostardt, 2012. Gesundheitsökonomische Evaluation – Das Für und Wider der QALYs. In: Matusiewicz, D., and J. Wasem: Gesundheitsökonomie, Duncker & Humblot, Berlin, 93- 101.
- Biermann, J., Weschenfelder, A.-K. and S. Mostardt, 2016. Projektportrait des Masterseminares Medizinmanagement: Wintersemester 2012/2013 - erste Erfahrungen im Bereich des Service-Learning. In: Altenschmidt, K. and W. Stark: Forschen und Lehren mit der Gesellschaft. Community Based Research und Service Learning an Hochschulen, Springer Fachmedien, Wiesbaden, 139-149.
- Borchert, M., Breyer, N., Schmitz, G., Schwarz, A., Schweinert, C., Thomas, D. and J. Wasem, 2012. Dienstleistungsproduktivität in der Krankenhauspflege. In: Möller, K. and W. Schultze: Produktivität von Dienstleistungen, Springer Gabler, Wiesbaden, 135-210.
- Borchert, M., Brockhaus, N., Jäschke, L., Reifferscheid, A., Schmitz, G., Thomas, D., Trachte, N., Wasem, J. and S. Wilbs, 2012. Dienstleistungsproduktivität in der Krankenhauspflege – Konzeptionelle Grundlagen und Modellentwicklung. IBES Diskussionsbeitrag, Faculty of economics, University of Duisburg-Essen, Essen, (196), 1-179.
- Brosig-Koch, J., Hehenkamp, B. and J. Kokot, 2016. The effects of competition on medical service provision. Ruhr Economic Papers, (647). DOI:10.4419/86788753. (submitted)
- Brosig-Koch, J., Henning-Schmidt, H., Kairies-Schwarz, N. and D. Wiesen, 2016. Physician performance pay: Evidence from a laboratory experiment. Ruhr Economic Papers, (658), DOI: 10.4419/86788764.
- Brosig-Koch, J., Kairies-Schwarz, N. and J. Kokot, 2014. Sorting into Physician Payment Schemes: A Laboratory Experiment. Ruhr Economic Papers, (529), DOI: 10.4419/86788606.
- Buchberger, B., Huppertz, H., Krabbe, L., Lux, B., Mattivi, J.T. and A. Sifarakas, 2015. Prevalence of Depressive and Anxiety Symptoms in Youth with Type 1 Diabetes – a Systematic Review and Meta-Analysis (Abstract). GMS German Medical Science, DOI: 10.3205/16ebm135.
- Buchberger, B., Krabbe, L., Kossmann, B. and J.T. Mattivi, 2016. Evidence mapping for decision making: feasibility versus accuracy – when to abandon high sensitivity in electronic searches (Abstract). Filtering the information overload for better decisions. Gesundheitswesen, 77, 163. DOI: 10.1055/s-0035-1563119.
- Buchberger, B., Krabbe, L., Kossmann, B. and J.T. Mattivi, 2016. Evidence mapping for decision making: feasibility versus accuracy – when to abandon high sensitivity in electronic searches (Abstract). Filtering the information overload for better decisions. In: The Cochrane Collaboration: Abstracts of the 23rd Cochrane Colloquium, John Wiley & Sons, Vienna, 274.
- Buchberger, B., Krabbe, L., Kossmann, B. and J.T. Mattivi, 2016. Evidence mapping zur Entscheidungsfindung: Machbarkeit versus Genauigkeit – Warum hoch sensitive Literaturrecherchen nicht unbedingt erstrebenswert sind (Abstract). GMS German Medical Science, DOI: 10.3205/15ebm086.
- Buchberger, B., Krabbe, L., Kossmann, B. and J.T. Mattivi, 2016. Evidence mapping zur Entscheidungsfindung: Machbarkeit versus Genauigkeit – Wie effektiv sind hoch sensitive Literaturrecherchen? (Abstract). GMS German Medical Science, DOI: 10.3205/15gmds179.
- Buchberger, B., Lux, B., Krabbe, L. and J.T. Mattivi, 2015. Möglichkeiten der Standardisierung von Rapid Reviews – Projektvorstellung (Abstract). GMS German Medical Science, DOI: 10.3205/16gmds107.
- Buchner, F. and S. Schillo, 2015. RSA-Systeme im internationalen Vergleich. Gesundheits- und Sozialpolitik, 70(4-5), 54-60.
- Buchner, F., Farrenkopf, N., Matusiewicz, D., Schillo, S., Staudt, S. and J. Wasem, 2012. Gesetzliche Krankenversicherung. In: Wasem, J., Staudt, S. and D. Matusiewicz: Medizinmanagement. Grundlagen und Praxis, Medizinisch Wissenschaftliche Verlagsgesellschaft, Berlin, 117-161.

- Cassel, D. and J. Wasem, 2012. Solidarität und Wettbewerb als Grundprinzipien eines sozialen Gesundheitswesens. In: Cassel, D., Jacobs, K., Vauth, C. and J. Zerth: Solidarische Wettbewerbsordnung. medhochzwei, Heidelberg, 3-43.
- Eibich, P., Schmitz, H. and N. Zierbarth, 2013. Add-On Premiums Increase Price Transparency: More Policy Holders Switch Health Plans. DIW Economic Bulletin, 2(2), 15-24.
- Felder, S., 2012. Auswirkungen der älter werdenden Gesellschaft auf das Gesundheitswesen Bleibt es bezahlbar? In: Günster, C., Klose, J. and N. Schmacke: Versorgungsreport 2012. Schwerpunkt: Gesundheit im Alter, Stuttgart, 10.
- Felder, S., 2016. Gesundheitsausgaben und demografischer Wandel. Bundesgesundheitsblatt - Gesundheitsforschung - Gesundheitsschutz, 55(5), 10.
- Felder, S., 2016. Bismarck plus Bahr: Die private Bürgerversicherung. ifo-Schnelldienst, 66(19), 7-8.
- Felder, S., 2016. Mit der Einheitskasse gegen steigende Gesundheitsausgaben? Auf dem Holzweg, Schweizerische Sozialversicherung. Schweizerische Sozialversicherung, 2(1), 17-18.
- Felder, S., Meyer, S. and R. Mennicken, 2012. Die Mengenentwicklung in der stationären Versorgung und Erklärungsansätze. In: Klauber, J., Geraedts, M., Friedrich, J. and J. Wasem: Krankenhaus Report 2013: Mengendynamik: Mehr Menge, mehr Nutzen?, Schattauer, Stuttgart, 95-109.
- Hentschker, C., Mennicken, R., Reifferscheid, A., Thomas, D., Wasem, J. and A. Wübker, 2014. Der kausale Zusammenhang zwischen Zahl der Fälle und Behandlungsqualität in der Krankenhausversorgung. RWI Materialien, 101, 1-160.
- Herr, A. and H. Hottenrott, 2016. Höhere Preise, höhere Qualität? Empirische Erkenntnisse zum deutschen Pflegeheimmarkt. In: Birg, L., Herr, A., and A.Schmid: DIBOGS - Beiträge zur Gesundheitsökonomik und Sozialpolitik, Band 10, OPUS, Bayreuth.
- Herr, A. and T.-V. Nguyen, 2015. Quality Responses to Nursing Home Report Cards in Germany. In: Birg, L., Herr, A., and A.Schmid: DIBOGS - Beiträge zur Gesundheitsökonomik und Sozialpolitik, Band 9, OPUS, Bayreuth.
- Herr, A., 2016. Wie lässt sich die Bereitschaft zur Organspende erhöhen? DICE Policy Brief, (7), 6-7.
- Heymann, R., Buchberger, B. and J. Wasem, 2012. Herausforderungen für die hausärztliche Versorgung und Lösungsansätze zum Umgang mit drohender medizinischer Unterversorgung. In: Kirch, W., Hoffmann, T. and H. Pfaff: Prävention und Versorgung, Thieme Verlag, Stuttgart, 506-525.
- Hoß, K., Pomorin, N., Reifferscheid, A. and J. Wasem, 2012. Arbeits- und Beschäftigungsfähigkeit vor dem Hintergrund des demografischen Wandels. IBES Diskussionsbeitrag, Faculty of economics, University of Duisburg-Essen, Essen, (200), 1-69.
- Jacobs, K., Schröder, W.F. and J. Wasem, 2012. Regionalität – Anmerkungen aus ordnungspolitischer Sicht. In: Klauber, J., Geraedts, M., Friedrich, J. and J. Wasem : Krankenhaus-Report 2012. Schwerpunkt: Regionalität, Schattauer, Stuttgart, 3-18.
- Jahn, R., Farrenkopf, N., Wasem, J. and A.Walendzik , 2012. Neuordnung der ambulanten Onkologie. Diskussionsbeiträge, Faculty of economics, University of Duisburg-Essen, Essen, (193), 1-94.
- Jahn, R., Farrenkopf, N., Wasem, J. and A.Walendzik, 2016. Neuordnung der ambulanten Onkologie. Gutachten im Auftrag des Berufsverbandes der niedergelassenen Hämatologen und Onkologen e.V., der Deutschen Gesellschaft für Hämatologie und Onkologie e.V. und der Deutschen Krebsgesellschaft. IBES Diskussionsbeitrag. IBES Diskussionsbeitrag, Faculty of economics, University of Duisburg-Essen, Essen, (193), 1-94.
- Jahn, R., Pomorin, N., Walendzik, A., Weegen, L. and J. Wasem, 2015. Analyse und Entwicklung von Anreizstrukturen zur nachhaltigen Förderung und Harmonisierung von Aktivitäten der Sozialversicherungsträger zum Erhalt und der Wiederherstellung der Arbeitsfähigkeit chronisch kranker Beschäftigter. IBES Diskussionsbeitrag, Faculty of economics, University of Duisburg-Essen, Essen, (209), 1-157.
- Jahn, R., Walendzik, A. and J.Wasem, 2012. Konzepte zur nachhaltigen Stärkung von Anreizen für die gesetzlichen Krankenkassen zur Vermeidung von Pflegebedürftigkeit. In: Mühlbauer, B.H., Kellerhoff, F. and D. Matusiewicz: Zukunftsperspektiven der Gesundheitswirtschaft, Band 10, LIT-Verlag, 175-189.
- Kerkemeyer, L., Pomorin, N., Wasem, J. and A. Reifferscheid, 2016. Exposure to limited resources in the gastroenterology – results of a survey of hospital physicians. Zeitschrift für Gastrologie, 54(11), 1237-1242.
- Klauber, J., Geraedts, M., Friedrich, J. and J. Wasem (editors) , 2012. Krankenhausreport 2013: Mengendynamik: mehr Menge, mehr Nutzen? Schattauer, Wiesbaden.
- Klauber, J., Geraedts, M., Friedrich, J. and J. Wasem (editors), 2012. Krankenhausreport 2012: Schwerpunkt: Regionalität. Schattauer, Wiesbaden.
- Klauber, J., Geraedts, M., Friedrich, J. and J. Wasem (editors), 2012. Krankenhausreport 2014: Schwerpunkt: Patientensicherheit. Schattauer, Wiesbaden.
- Krabbe, L. and B. Buchberger, 2015. Horizon Scanning im Gesundheitswesen – wo steht Deutschland? (Abstract). GMS German Medical Science, DOI: 10.3205/16ebm114.
- Lux, G., Biermann, J., Dahl, H., Matusiewicz, D., Mostardt, S., Nimptsch, U., Wasem, J. and A. Walendzik, 2012. Risikoadjustierung und Komorbiditäten. In: Swart, E., Ihle, P., Gothe, H. and D. Matusiewicz: Routinedaten im Gesundheitswesen. Handbuch Sekundäranalyse: Grundlagen, Methoden und Perspektiven, 2nd edition, Hans Huber, Bern, 411-423.

- Lux, G., Schillo, S. and J. Wasem, 2015. Die Berücksichtigung von Auslandsversicherten im RSA. *Gesundheitswesen aktuell*, 94-109.
- Lux, G., Steinbach, P., Wasem, J., Weegen, L. and A. Walendzik, 2012. Demografie und Morbiditätsentwicklung. In: Klauber, J., Geraedts, M., Friedrich, J. and J. Wasem : *Krankenhausreport 2013. Mengendynamik: mehr Menge, mehr Nutzen?*, Schattauer, Stuttgart, 69-82.
- Lux, G., van der Linde, K., Walendzik, A., Wasem, J. and S. Schillo, 2014. Die Berücksichtigung von Zuzahlungsbefreiungen im RSA - Ausgestaltungsmöglichkeiten und Wirkungen einer erweiterten Berücksichtigung sozioökonomischer Faktoren. IBES Diskussionsbeitrag, Faculty of economics, University of Duisburg-Essen, Essen, (207), 1-41. URL: https://www.wiwi.uni-due.de/fileadmin/fileupload/WIWI/pdf/IBES_2015_nr207.pdf.
- Matteucci, G.R. and B. Buchberger, 2012. Bias und Confounding. In: Swart, E., Ihle, P., Gothe, H. and D. Matusiewicz: *Routinedaten im Gesundheitswesen. Handbuch Sekundäranalyse: Grundlagen, Methoden und Perspektiven*, 2nd edition, Hans Huber, Bern, 424-434.
- Matusiewicz, D., Lux, G., Wasem, J. and R. Jahn, 2012. Ermittlung von Wahrscheinlichkeiten von chronischen Erkrankungen – ein Prognosemodell mit Routinedaten der gesetzlichen Krankenversicherung In: Kirch, W., Hoffmann, T. and H. Pfaff: *Prävention und Versorgung 2012 für die Gesundheit 2030*. Thieme Verlag, Stuttgart, 712-724.
- Matusiewicz, D. and J. Wasem (editors) , 2013. *Gesundheitsökonomie. Bestandsaufnahme und Entwicklungsperspektiven*. Duncker & Humblot, Berlin.
- Matusiewicz, D. and J. Wasem, 2013. Gesundheitsökonomie in Deutschland – ein Blick zurück nach vorne. In: Mühlbauer, B.H., Kellerhoff, F. and D. Matusiewicz: *Zukunftsperspektiven der Gesundheitswirtschaft*, LIT-Verlag, Berlin, 420-438.
- Matusiewicz, D., Dante, C. and J. Wasem, 2012. Die Bedeutung der Balanced Scorecard für die gesetzliche Krankenversicherung – eine Bestandsaufnahme. In: Mühlbauer, B.H., Kellerhoff, F. and D. Matusiewicz: *Zukunftsperspektiven der Gesundheitswirtschaft*, Band 10, LIT-Verlag, Berlin, 319-340.
- Matusiewicz, D., Kochanczyk, M., Wasem, J. and G. Lux, 2013. Kassenpatriotismus? Eine empirische Analyse zum Wechselverhalten in der Gesetzlichen Krankenversicherung. In: Böcken, J., Braun, B. and U. Repschläger: *Gesundheitsmonitor 2012. Bürgerorientierung im Gesundheitswesen. Kooperationsprojekt der Bertelsmann Stiftung und der BARMER GEK*, Verlag Bertelsmann Stiftung, Gütersloh, 79-98.
- Matusiewicz, D., Neumann, A., Kerkemeyer, L., Lux, G., Buchberger, B., Mostardt, S., Biermann, J., Pouryamout, L. and J. Wasem, 2013. *Forschung und Beratung im Gesundheitswesen*. In: Wasem, J., Staudt, S. and D. Matusiewicz: *Medizinmanagement. Grundlagen und Praxis*, Medizinisch Wissenschaftliche Verlagsgesellschaft, Berlin, 441-499.
- Matusiewicz, D., Paquet, R. and J. Wasem, 2013. Gesundheitsökonomie in Deutschland – Historie, Entwicklungen und Berufsbilder. In: Matusiewicz, D. and J. Wasem : *Gesundheitsökonomie*, Duncker & Humblot, Berlin, 9-28.
- Matusiewicz, D., Wasem, J. and G. Lux, 2013. Patienteninformation und –kommunikation im Versorgungsmanagement – eine kritische Abhandlung. In: Burger, S.: *Alter und Multimorbidität. Herausforderungen an die Gesundheitsversorgung und die Arbeitswelt*, medhochzwei, Heidelberg, 207-226.
- Okoampah, S., 2016. *Four Empirical Essays on Demographic Change and the Labor Market (Dissertation)*. Faculty of economics, University of Duisburg-Essen, Essen.
- Reifferscheid, A., Thomas, D. and J. Wasem, 2013. Zehn Jahre DRG-System in Deutschland – Theoretische Anreizwirkungen und empirische Evidenz. In: Klauber, J., Geraedts, M., Friedrich, J. and J. Wasem : *Krankenhaus-Report 2013. Mengendynamik: mehr Menge, mehr Nutzen?*, Schattauer, Stuttgart, 3-19.
- Reifferscheid, A., Thomas, D., Pomorin, N. and J. Wasem, 2014. Strukturwandel in der stationären Versorgung. In: Klauber, J., Geraedts, M., Friedrich, J. and J. Wasem: *Krankenhaus-Report 2015. Schwerpunkt: Strukturwandel*, Schattauer, 3-12.
- Reifferscheid, A., Wasem, J. and D. Thomas, 2014. Hochschulambulanzen. In: Klauber, J., Geraedts, M., Friedrich, J. and J. Wasem: *Krankenhaus-Report 2016. Schwerpunkt: Ambulant im Krankenhaus*, Schattauer, 85-96.
- Schillo, S., Dahl, H., Wasem, J. and K. Tebarts, 2013. Verbesserung der Zuweisungen für Krankengeld im morbiditätsorientierten RSA. In: Repschläger, U., Schulte, C. and N. Osterkamp: *Gesundheitswesen aktuell 2014*, Barmer GEK, 134-150.
- Schnitzler, P. and S. Schillo, 2013. Additive Vergütungsformen für akut-stationäre Behandlungsfälle in der Schweiz. *Schweizerische Ärztezeitung*, 93(46), 1716-1719.
- Tauchmann, H., 2013. Sozialethische Kriterien und konkrete Reformvorschläge für eine gerechte Umorganisation des Gesundheitswesens: Eine Betrachtung aus ökonomischer Perspektive. In: Dabrowski, M., Wolf, J. and K. Abmeier: *Gesundheitssystem und Gerechtigkeit*, Ferdinand Schöningh, Paderborn, 185-191.
- Tebarts, K., Ballesteros, P., Dahl, H., Lux, G., Wasem, J. and S. Schillo, 2013. Verbesserung der Zuweisungen für Krankengeld im morbiditätsorientierten RSA. In: Repschläger, U., Schulte, C. and N. Osterkamp: *Gesundheitswesen aktuell 2012*, Barmer GEK, Düsseldorf, 184-208.
- Thomas, D. and J. Wasem, 2013. Dienstleistungsproduktivität in der Krankenhauspflege – Eine Data Envelopment Analysis. In: Bouncken, B.R., Pfannstiel, M. and A. Reuschl: *Dienstleistungsmanagement im Krankenhaus-Prozesse, Produktivität, Diversität*, Springer Gabler, Wiesbaden, 179-202.

- Thomas, D., Reifferscheid, A., Walendzik, A., Wasem, J. and N. Pomorin, 2013. Patientengefährdung durch Fehlanreize – die Folge des Vergütungssystems? In: Klauber, J., Geraedts, M., Friedrich, J. and J. Wasem : Krankenhaus-Report 2014. Schwerpunkt: Patientensicherheit, Schattauer, Stuttgart, 13- 23.
- Walendzik, A. and S. Hebrok, 2015. Neugestaltung der ambulanten psychotherapeutischen Versorgung in Deutschland. *Gesundheit und Sozialpolitik*, 69, 62-69.
- Walendzik, A., Lux, G., van der Linde, K. and J. Wasem, 2015. Finanzielle Auswirkungen der formalen Überleitung auf Basis der Pflegestärkungsgesetze für die Gesetzliche Pflegeversicherung (Soziale Pflegeversicherung und Private Pflegepflichtversicherung). IBES Diskussionsbeitrag, Faculty of economics, University of Duisburg-Essen, Essen, (215), 1-26.
- Walendzik, A., Buchner, F. and J. Wasem, 2015. Competition in Private Health Insurance in Germany: Models for Transferable Ageing Provisions. *Newsletter Health and Ageing-The Geneva Association*, (33), 1-6.
- Walendzik, A., Lux, G., van der Linde, K. and J. Wasem, 2015. Datenlage in der Gesetzlichen Pflegeversicherung (Soziale Pflegeversicherung und Private Pflegepflichtversicherung). IBES Diskussionsbeitrag, Faculty of economics, University of Duisburg-Essen, Essen, (214), 1-16.
- Wasem, J. and A. Walendzik, 2015. Effizienzvorteile versus nationale Wertentscheidungen. *Gerechte Gesundheit*, (31), 13.
- Wasem, J. and K. Höfinghof, 2014. Ökonomische Bewertung der Leistungssteuerung in der PKV. In: Dörmer, H., Ehlers, D., Pohlmann, P., Schulze Schwienhorst, M. and H.D. Steinmayer: 17. Münsterische Sozialrechtstagung. Kooperationsfelder und Steuerungsmechanismen in GKV und PKV – wer lernt von wem?, Verlag Versicherungswirtschaft, Karlsruhe, 81-99.
- Wasem, J. and S. Staudt, 2016. Wie muss Wettbewerb weiter ausgestaltet werden? *Vierteljahresschrift für Sozialrecht*, 30, 201-212.
- Wasem, J., Buchner, F., Walendzik, A. and with the assistance of M. Schröder, 2015. Qualitative Analysen zur harmonisierten Berechnung einer Alterungsrückstellung und der verfassungskonformen Ausgestaltung ihrer Portabilität. IBES Diskussionsbeitrag, Faculty of economics, University of Duisburg-Essen, Essen, (218), 1-108.
- Wasem, J., 2013. Betreibt der Gemeinsame Bundesausschuss explizite Rationierung? In: Gemeinsamer Bundesausschuss: Begegnungen ... mit Dr. Rainer Hess, Gemeinsamer Bundesausschuss, Berlin, 202-203.
- Wasem, J., 2016. Wer kann, der darf. *Rheuma Management*, 4, 3.
- Wasem, J., Dahl, H. and D. Matusiewicz, 2013. Ambulante zahnmedizinische Versorgung. In: Wasem, J., Staudt, S. and D. Matusiewicz: *Medizinmanagement. Grundlagen und Praxis*, Medizinisch Wissenschaftliche Verlagsgesellschaft, Berlin, 341-353.
- Wasem, J., Jahn, R. and S. Staudt, 2014. Der Gesundheitsfonds – ein Beitrag zu Gerechtigkeit, Zukunftssicherung und funktionierendem Wettbewerb im GKV-System? *Wirtschaftsdienst*, 94 (8), 539-541. DOI :10.1007/s10273-014-1712-8.
- Wasem, J., Lux, G. and D. Thomas, 2014. Wichtige Umfeldbedingungen. In: Debatin, J.F., Ekkernkamp, A., Schulte, B. and A. Tecklenburg: *Krankenhausmanagement. Strategien, Konzepte, Methoden*. Medizinisch Wissenschaftliche Verlagsgesellschaft, Berlin, 9-12.
- Wasem, J., Lux, G. and S. Schillo, 2014. Gutachten zu Zuweisungen für Auslandsversicherte nach § 269 Abs. 3 SGB V i. V. m. § 33 Abs. 4 RSAV, Gutachten im Auftrag des Bundesversicherungsamtes. URL: http://www.bundesversicherungsamt.de/fileadmin/redaktion/Risikostrukturausgleich/Weiterentwicklung/20160124_Gutachten_Zuweisungen_Auslandsversicherte_final_1.pdf.
- Wasem, J., Lux, G., Neusser, S. and S. Schillo, 2015. Berücksichtigung des Krankengelds im RSA. *Gesundheits- und Sozialpolitik*, 70(4-5), 15-20.
- Wasem, J., Matusiewicz, D., Staudt, S., Jahn, R., Lux, G., Dahl, H. and M. Noweski, 2014. Akteure des Gesundheitswesens in Deutschland. In: Wasem, J., Staudt, S. and D. Matusiewicz: *Medizinmanagement. Grundlagen und Praxis*, Medizinisch Wissenschaftliche Verlagsgesellschaft, Berlin, 49-115.
- Wasem, J., May, U., Walendzik, A., Jahn, R., Bauer, C. and L. Weegen, 2015. Perspektiven der Arzneimittelregulierung: Eine Bestandsaufnahme von AMNOG-Defiziten und Szenarien zu ihrer Überwindung. In: Höfel, F.: *Versorgungsforschung, Einsichten, Beispiele und Akteure*, Schattauer, Stuttgart, 72-80.
- Wasem, J., Reifferscheid, A., Pomorin, N. and D. Thomas, 2014. Bedarf an Standards zur Personalbemessung in der Krankenhauspflege. *Soziale Sicherheit*, 3, 105-108.
- Wasem, J., Reifferscheid, A., Südmersen, C., Faßbender, R. and D. Thomas, 2014. Das pauschalierende Entgeltsystem für psychiatrische und psychosomatische Einrichtungen. Prüfung der Eignung alternativer Abrechnungseinheiten gemäß dem gesetzlichen Prüfauftrag nach § 17d Abs. 1 S. 2 KHG. IBES Diskussionsbeitrag, Faculty of economics, University of Duisburg-Essen, Essen, (195), 1-50.
- Wasem, J., Schillo, S., Lux, G. and S. Neusser, 2015. Gutachten zu Zuweisungen für Krankengeld nach § 269 Abs. 3 SGB V i. V. m. § 33 Abs. 3 RSAV, Gutachten im Auftrag des Bundesversicherungsamtes. URL: http://www.bundesversicherungsamt.de/fileadmin/redaktion/Risikostrukturausgleich/Weiterentwicklung/Gutachten_Krankengeld.pdf.
- Wasem, J., Staudt, S. and D. Matusiewicz (editors), 2014. *Medizinmanagement. Grundlagen und Praxis*. Medizinisch Wissenschaftliche Verlagsgesellschaft, Berlin.

Wasem, J., Weegen, L., Bauer, C., Walendzik, A., Grande, F. and U. May, 2015. Regulatorische Handhabung der selektiven Erstattung von Arzneimitteln in den ausgewählten Ländern England, Niederlande, Frankreich und Schweden. IBES Diskussionsbeitrag, Faculty of economics, University of Duisburg-Essen, Essen, (211), 1-46.

Weegen, L., May, U., Bauer, C., Walendzik, A. and J. Wasem, 2015. Umsetzung des AMNOG in die Versorgungspraxis. IBES Diskussionsbeitrag, Faculty of economics, University of Duisburg-Essen, Essen, (217), 1-41.

NOTES

NOTES

Address: CINCH - Health Economics Research Center
Weststadttürme Berliner Platz 6-8
45127 Essen, Germany

Phone: +49 (0)201 183-4622

Fax: +49 (0)201 183-3716

Email: info@cinch.uni-due.de

Web: www.cinch.uni-due.de

Copyright © 2017 CINCH



competent in competition + health